



润鼎铝模
AL-FORMWORK

Products Introduction

www.rdalformwork.com

CONTENTS

- 1- New material
- 2- Al-Formwork Standard Panels
- 3- Al-Formwork Profiles
- 4- Formwork Accessories
 - 4.1- Attachment system
 - 4.2- Fasten system
 - 4.2.1- Rod tie
 - 4.2.2- Flat tie
 - 4.3- Supporting system
- 5- Support Products
 - 5.1- Plywood Formwork
 - 5.2- Plastic Formwork
 - 5.3- Prefabricated Houses
 - 5.4- Scaffolding Systems
- 6- Other Building Materials



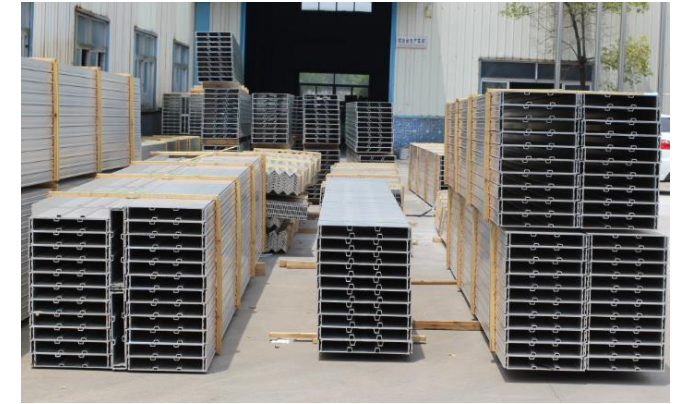
1- A Brand New Aluminum Alloy Material



Aluminum alloy ingots



Aluminum alloy Billets



Aluminum formwork profiles



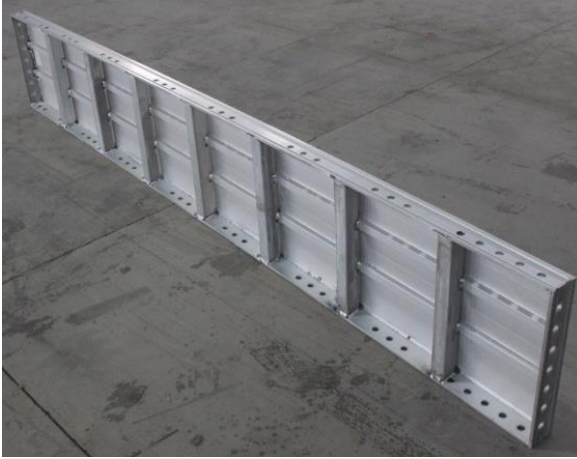
Aluminum formwork panels

RD Al-Formwork adopt a brand new aluminum alloy material to produce Al-formwork panels.

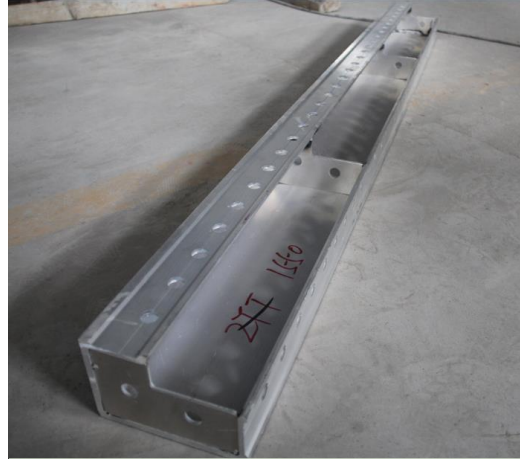
Returned or wasted aluminum alloy materials are not allow to use.

2- Aluminum Formwork Standard Panels

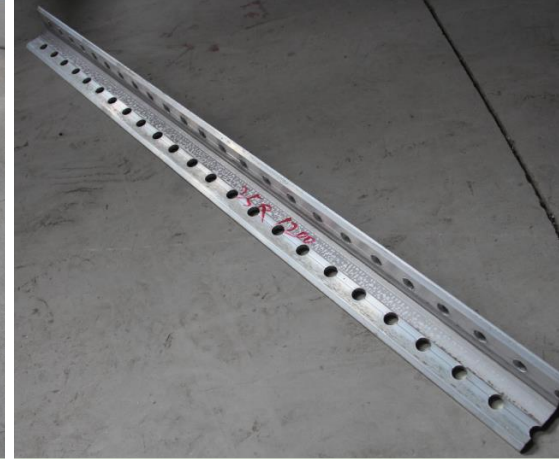
Followings are the generally components of Al-formwork system, also called them as Aluminum Formwork Standard Panel which applied to many construction structures. There are 70% Aluminum formwork standard panels could be moved to next project in the reasonable using.



Wall Panel (W)



Internal Corner (IC)



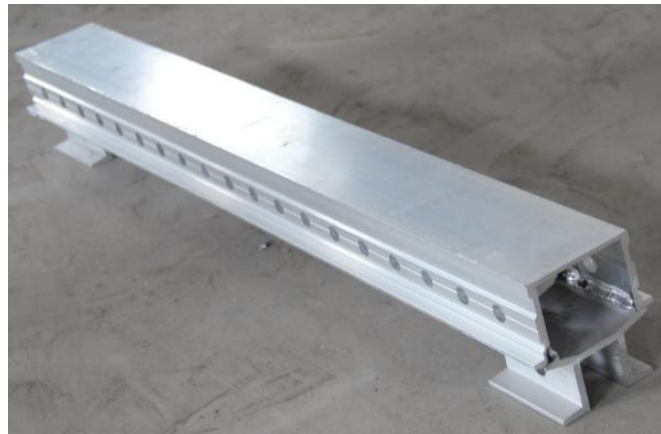
External Corner (EC)



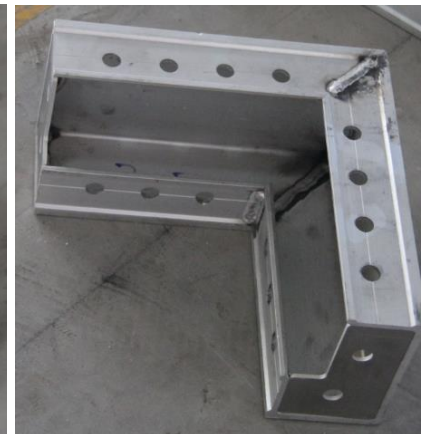
Wall Footing (WF)



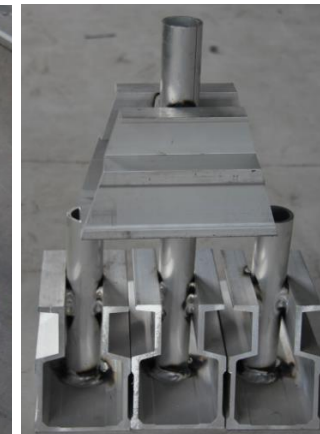
Slab/ Deck Panel (D)



End / Middle Beam (EB / MB)



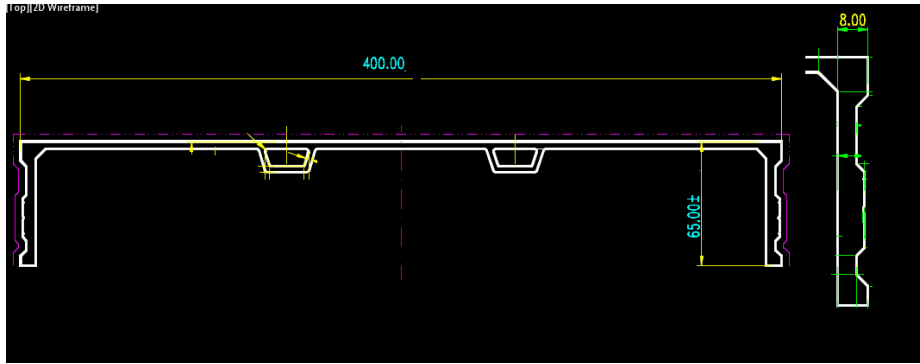
Soffit Corner (SC)



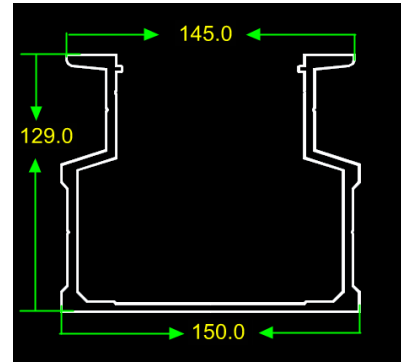
Deck Prop Head (DPH)

3- Aluminum Formwork Profiles

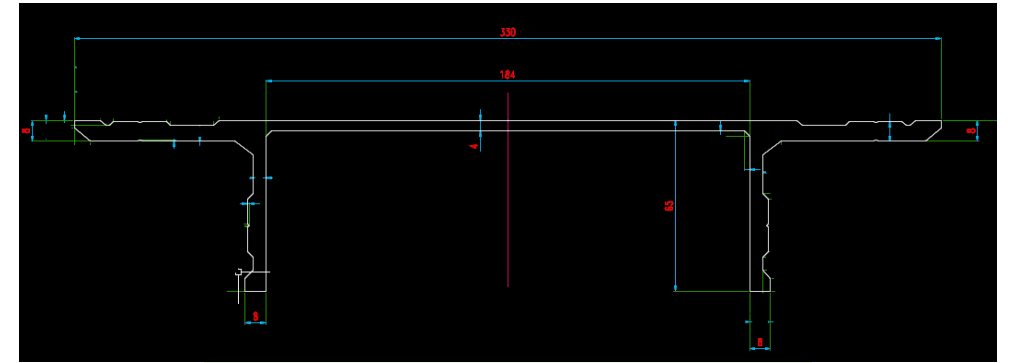
RD also sell the Al-formwork profiles to customers directly for CNC or manufacture deepen processing, become to al-formwork panels to satisfy with the futured development of aluminum formwork demands, specially non-standard panels.



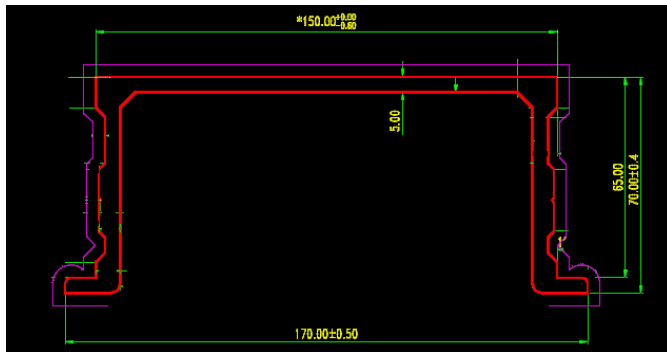
Wall or Deck formwork panel profile (with reinforcement)



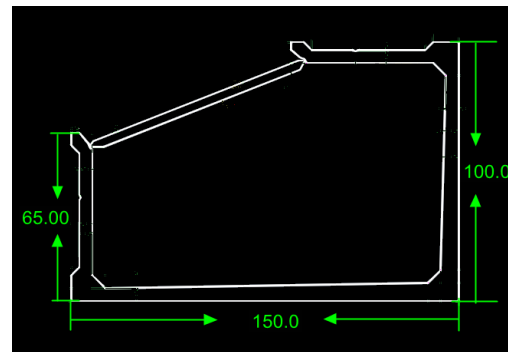
Beam prop head profile



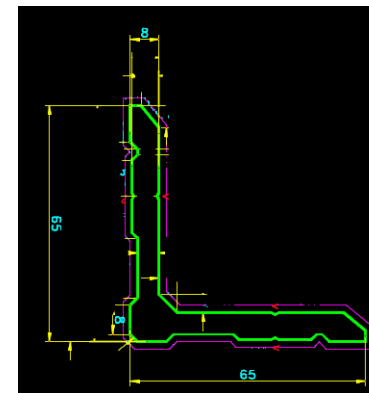
Wall end panel profile



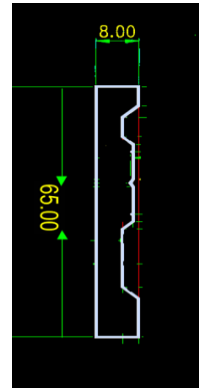
Beam profile



Soffit corner profile



Corner profile



Side plate profile

4- Formwork Accessories

RD company will introduce the purpose and function of fasten system, support system and attachment system. All of accessories of Aluminum formwork system can be purchased as an extra, to refill the construction materials.



Attachment system

Attachment system means the tools during assembling & dismantling process, which are able to help workers how to pass the formwork and separate the al-formwork system easily, quickly and in safety situation.



Support system

In order to support the slab structures stable and keep the wall and column structures in straightly, Standing support and Oblique prop are adjustable and could be combined easily. Aluminum formwork system with using the special support props, make the working space larger and work movement flexible.



Fasten system

Fasten system mainly purpose are to make the aluminum formwork panel connection to be a part or be a complete formwork system tightly; To keep the Al-formwork structures be vertical straightly, in horizontal level and not easy to be deformed when pouring concrete.

4.1- Attachment system



Hammer , Podger are helpful to assemble and dismantle the formwork. Fix and take off the pins by hammer. **Podger** also have adjust function the formwork panels when installing.

Concrete casting finished, the Al-formwork panels could be dismantle by **Panel puller**. Hooded up the holes of formwork then can pull it out.



PVC Sleeve Ejector



Flat Tie Puller

If used Flat Tie fasten with reusable flat plates, **PVC Ejector & Flat Tie Puller** to take off the PVC sleeves and steel flat plates for recycling use.



Transfer Box

Used to reserve passing hole in the slab for panels and smaller materials transferring from lower floor to upper floor.



Work Bench

As a working platform for the worker stand on it, then install and dismantle the formwork panels on high place.

4.2- Fasten system

Dowel pins and screws are necessary for a whole al-formwork system whether use Flat tie system or Rod tie system.



Long dowel & Wedge pin

To link the Joint bar, Deck prop head, End beam and Middle beam by **Long dowels and wedge pins**.



Short dowel & Wedge pin

Short dowels and wedge pins are fixed to connect the panels and panels.



Short screw & Nut

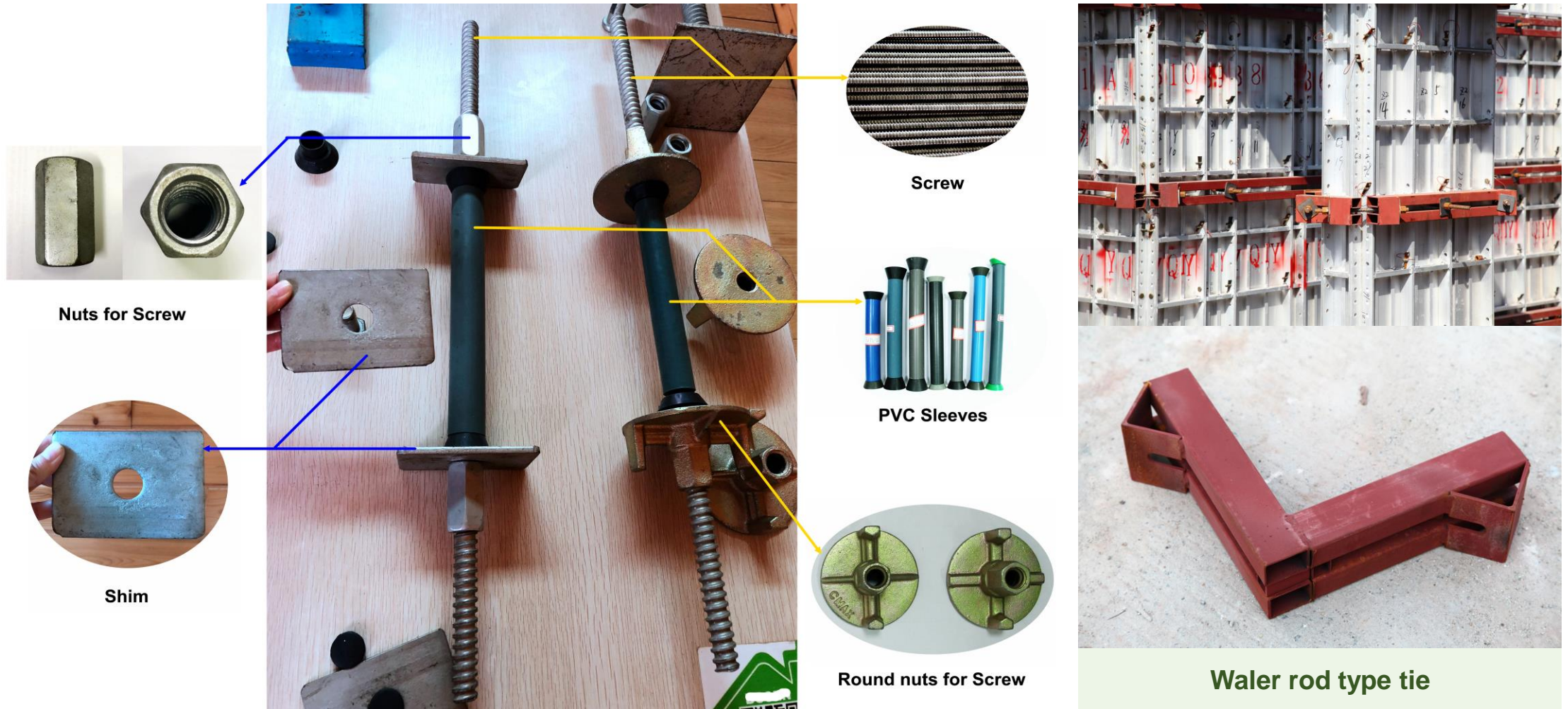
Short screws and **nuts** are used to connected the Al-angle bar to the formwork panels, which for a long time and stable combination. It is normally used into end formwork panels.



Screw for Kicker panel

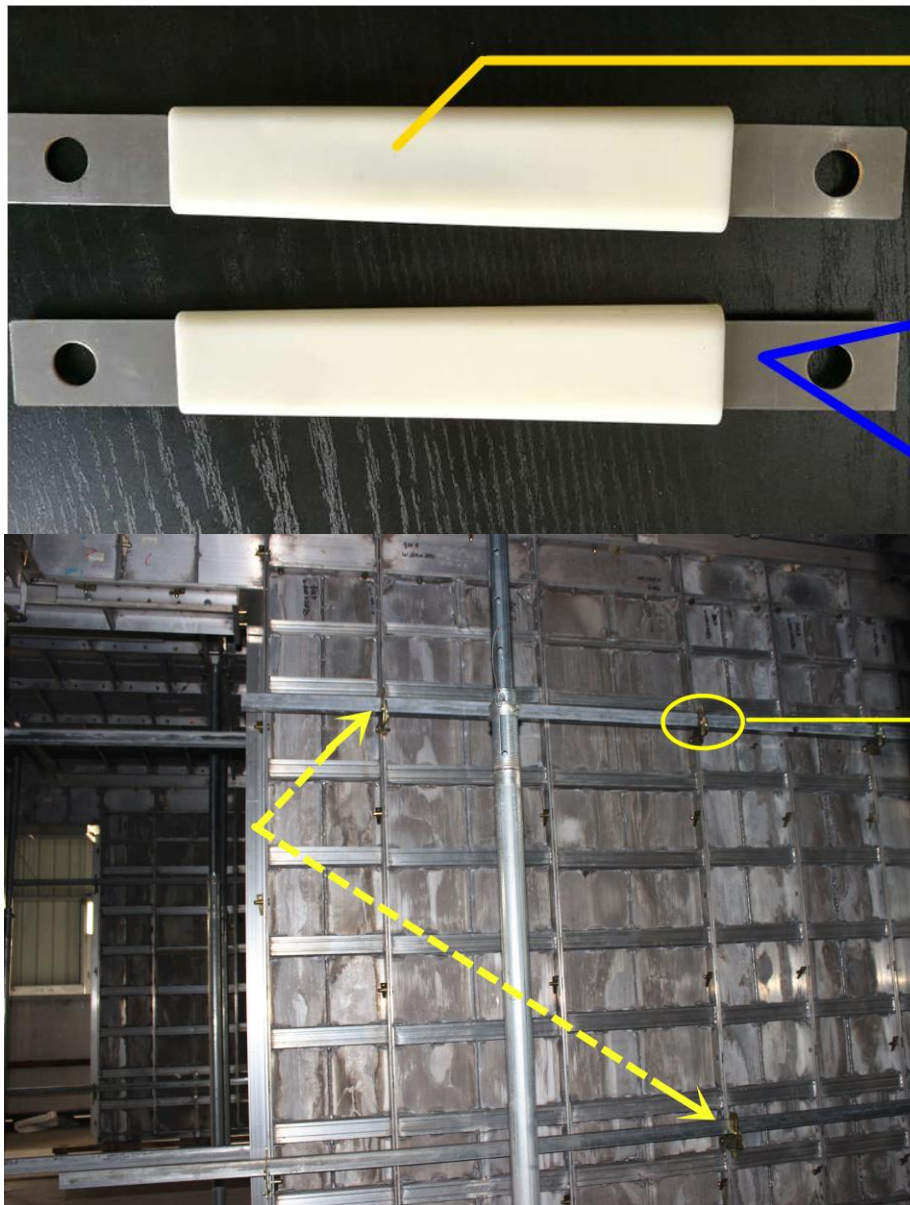
It is **a special Screw to use for Kicker panel** and the shape like conical with thread on the surface. Used to fasten the kicker panels where the drilling holes as the shape of oval.

4.2.1- Rod Tie Fasten System



The accessories for Rod Tie system are Screw rod, PVC Sleeves, Nuts, Round nuts, Shims and special fasten walers. These special fasten steel walers are customized depend on Al-formwork system designed while adopting Rod Tie system. Using for fix on the wall panels in case of formwork deforming when pouring concrete. Ensure the thickness of wall structures and column structures.

4.2.2- Flat Tie Fasten System



PVC Sleeves



Disposable Flat Tie



Reusable Flat Tie



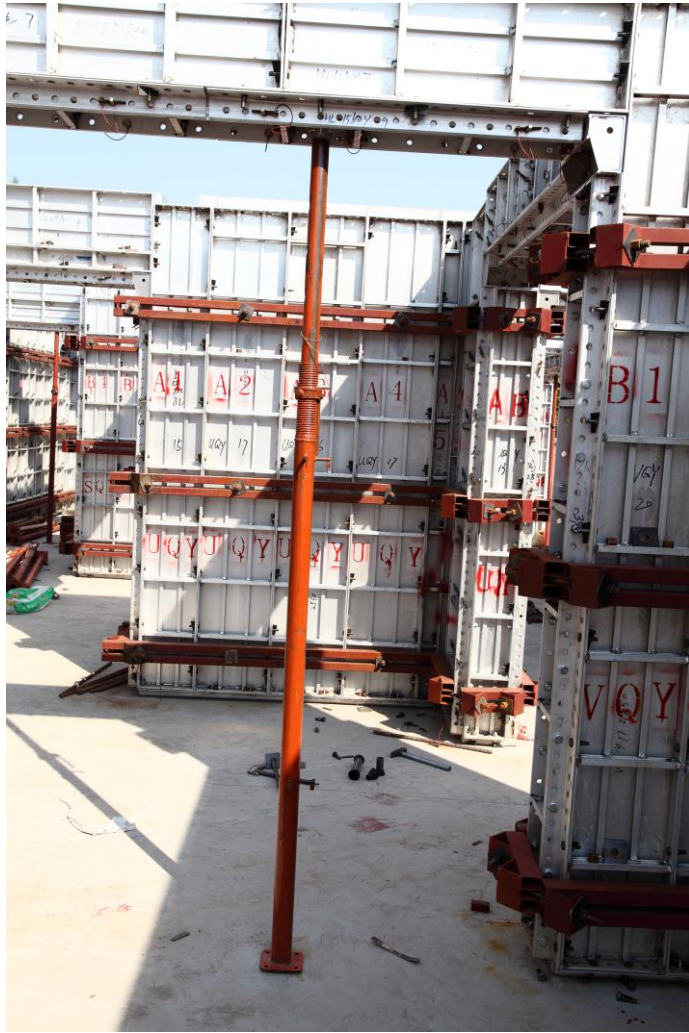
Square tubes



Hooks

Flat Tie system made of Flat plate, PVC sleeves, steel hooks and square tubes. Fixed to between the internal panel and external wall panel in case of formwork deforming when pouring concrete. Ensure the thickness of wall structures. Comparing with Rod Tie fasten walers, square tubes as walers with same purpose but they are convenient to be carried and moved. Flat Tie system need pointed tools to dismantle, which are PVC ejector and flat tie puller (Look at the attachment system).

4.3- Supporting system



Steel Standing Support Prop

Adjustable ***standing support prop*** generally used for connecting to Deck prop head as purpose for supporting the floors. And standing prop must be removed after 15 days at least since finished concrete casting.

Pull push support prop is easy to know its purpose. Used to be straight for the vertical aluminum formworks, increased the formworks stiffness and keep them stably, the vertical formworks are not easy to be deformed or swelled during pouring concrete.



Steel Pull Push Support Prop

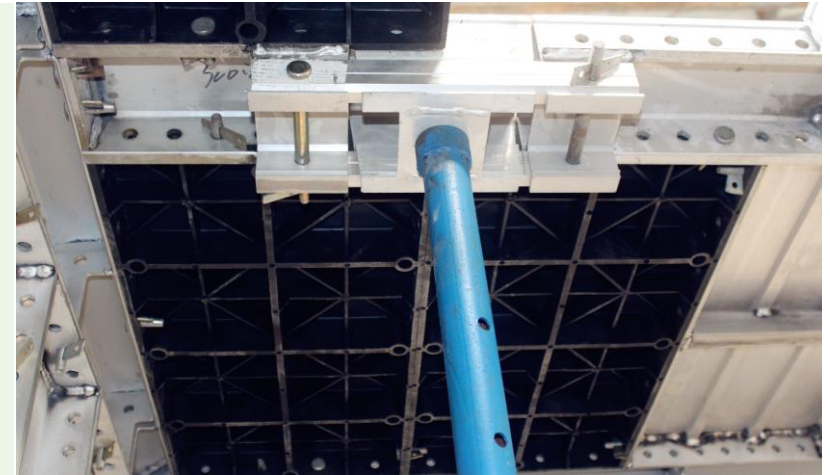
5- Support Products

Except an entirety Aluminum formwork system, we also provide more supporting services for our esteemed customer, even the building materials for a whole construction project. Customer choose our acquaintance suppliers and select their professional in building materials, it helpful to save the purchasing time for clients to projects.

**Plywood
Formwork**



**Plastic
Formwork**



**Prefabricate
Houses**



**Scaffolding
System**



5.1- Plywood Formwork



Film face plywood



Phenolic Plywood



Wood Face Plywood



Timber



RD not only offer al-formwork system for typical floors, but also count the requested quantities of plywood formwork according to building drawings and help customer to buy plywood material for your project required directly. It is really helpful to start construction works quickly and save time of purchasing for clients.

5.2- Plastic Formwork



Plastic Formwork-
Carbon Fiber



Plastic Formwork-
Glass Fiber

RD's plastic formwork with **carbon fiber** material inside, which hardness and bearing capacity are better than other plastic formwork and achieved decoration and water fair-faced concrete without using demolding agents. RD promote **formwork system combination** is the non-standard aluminum formwork panels collocate with standard plastic formwork panels, then all of accessories (for Rod Tie fasten system) of Al-formwork system are matched with plastic formwork's.

Formwork Combination



5.3- Prefabricated Houses

It is necessary to provide the prefabricated houses for workers living at **construction worksite**. Prefabricated houses have effects of windproof, soundproof, heat preservation and inflaming retarding, they are easy to be assembled as temporary offices, dormitories and canteens under construction site.

Especially, mobile container houses could become housing structure after loading, saving time of installation with nice look and clean, without any rubbish at site.

In addition, workshops, factories, public transport facilities and holiday villas which are available to be built by steel structures of fabricated house.



K House



T House



Villa



Mobile Container



Factory

5.4- Scaffolding Systems



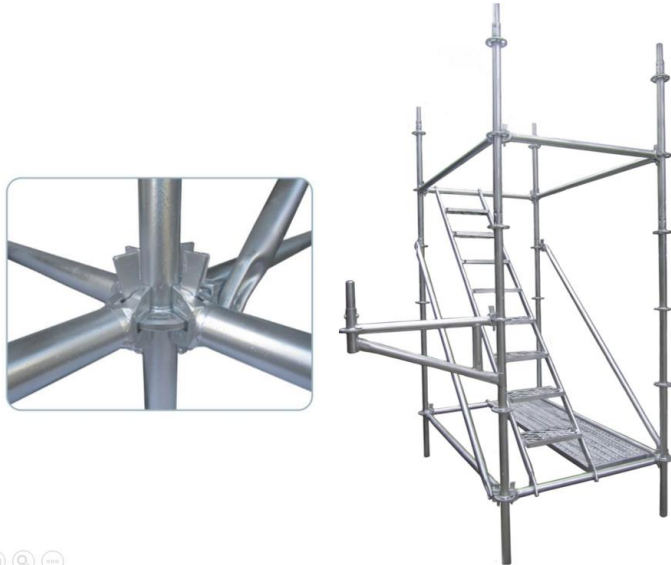
H Frame Scaffolding

Scaffolding system is indispensable supporting products for construction projects. We able to supply full kinds of scaffolding products for using in different worksites and projects requested. Such as Cuplock scaffold system, Ringlock scaffold system, Kwikstage scaffold system, etc.

The purchasing quantities of scaffolding products in accordance with our clients' architectures requirement. In the meanwhile, saving procurement time of construction material for customer.



Quicklock Scaffolding



Ringlock Scaffolding



Cuplock Scaffolding

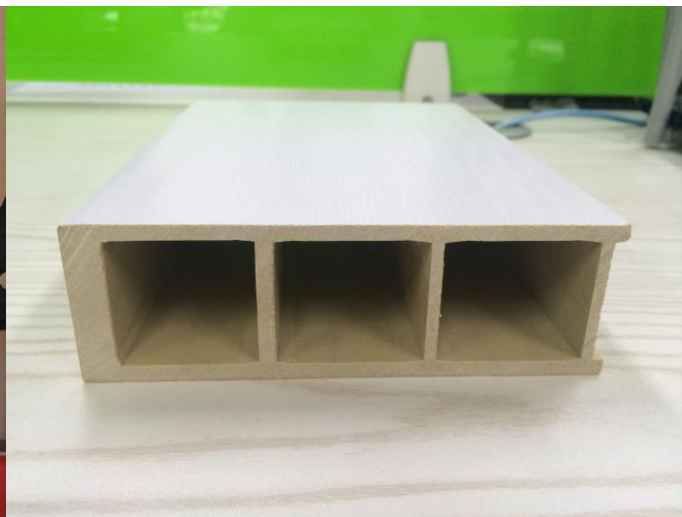


Kwikstage Scaffolding

6- Other Building Materials



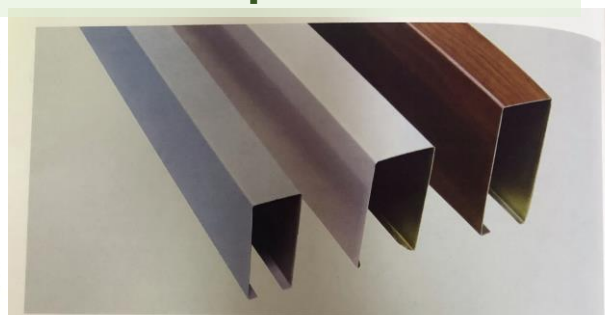
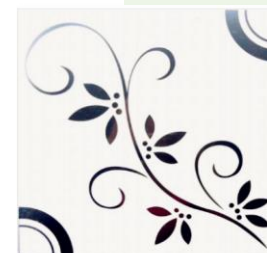
Wood Plastic Composite (WPC) Doors



PVC Pipes



Aluminum windows & doors



Aluminum Ceilings

Hope our profession will help you!



Email: rdalformwork@gmail.com

Tel: 0757-63813070

Office Address:

907 & 1505-1507 Building 6 Area A, Hao Scinece Park,
Guicheng Nanhai Foshan City, Guangdong Province,
China.

Factory Address:

(Navigation direct search"佛山市润鼎金属制品有限公司"
can arrive easily)

Website:

www.rdalformwork.com