



润鼎铝模
AL-FORMWORK

Contents

1. Company Introduction

1-1 Head Office

1-2 Overseas Representatives

1-3 Factory

1-4 Our Main Market

2. Aluminum Formwork

2-1 Our system

2-2 Our Advantages

2-3 Typical Projects Sharing

2-4 Ordering process

Company Introduction



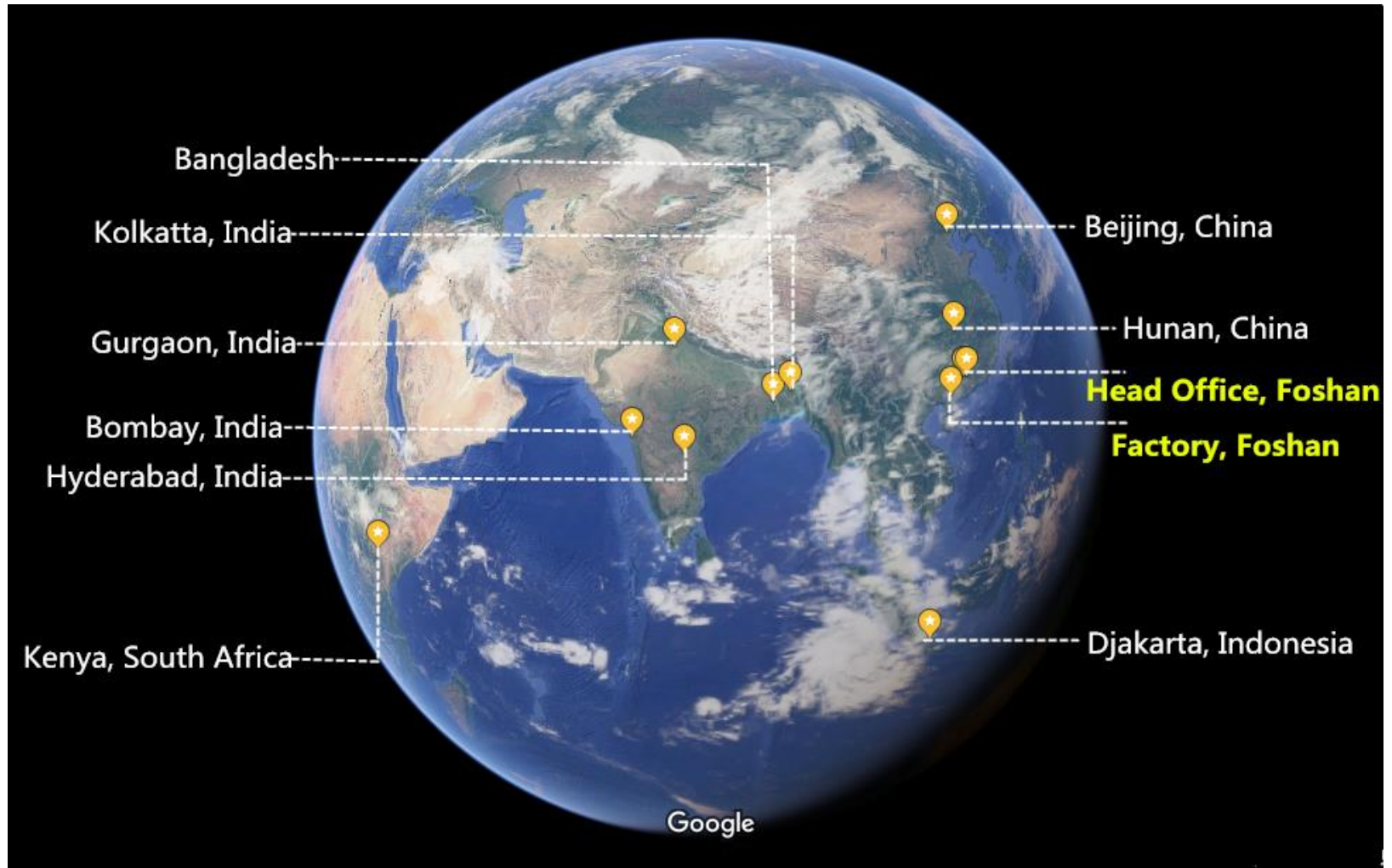
1. Company Introduction / 1-1 Head Office



Hao Science Park----located in Foshan.

Sales dept (domestic & foreign), after-service dept, financial dept.

1. Company Introduction / 1-2 Overseas Representatives

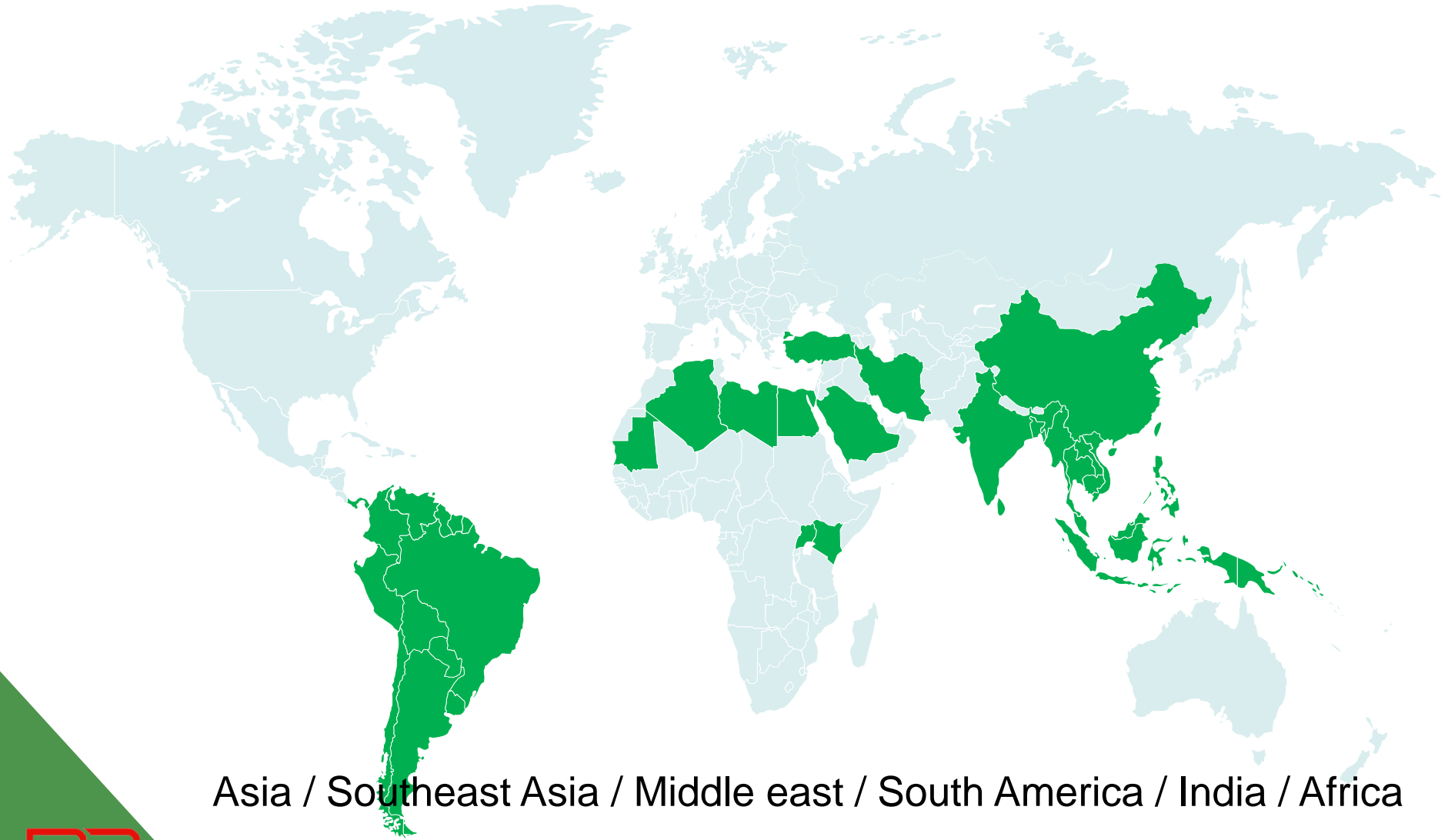


1. Company Introduction / 1-3 Factory



Factory----located in Foshan Sanshui District.
Design dept, Engineering dept, Production dept, Trail assembling
dept, Quality inspection dept.

1. Company Introduction / 1-4 Our main markets



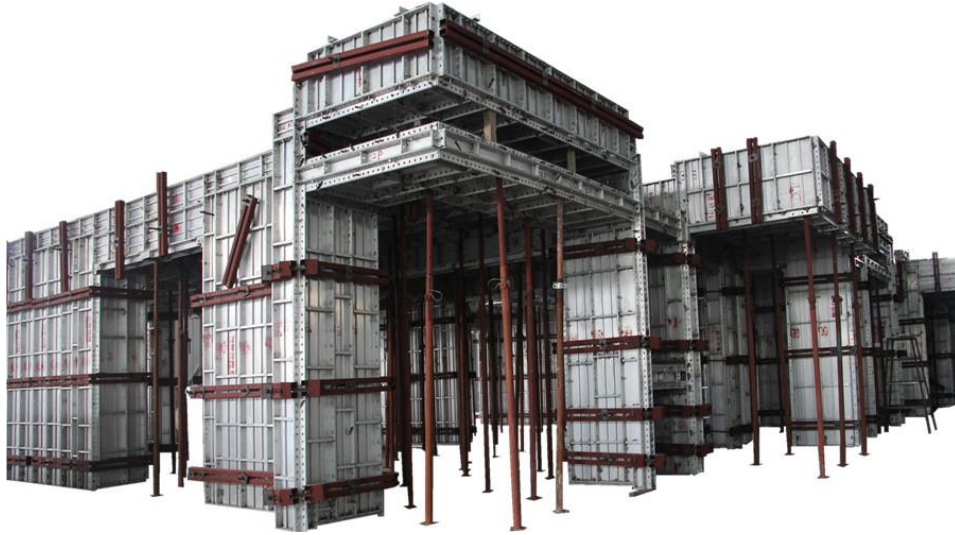
Asia / Southeast Asia / Middle east / South America / India / Africa

Aluminum Formwork



润鼎铝模
AL-FORMWORK

2. Aluminum Formwork / 2-1 Our system



Screw tie rod system



Flat tie rod system



2. Aluminum Formwork / 2-2 Our advantages----1

2007 Opening Ceremony



1-1. Founded since 2007

1-2. We are the aluminum formwork industry-old head.

1-3. Flexible cooperation mode is our outstanding advantage.

1-4. 25000m² production capacity.

2. Aluminum Formwork / 2-2 Our advantages----2

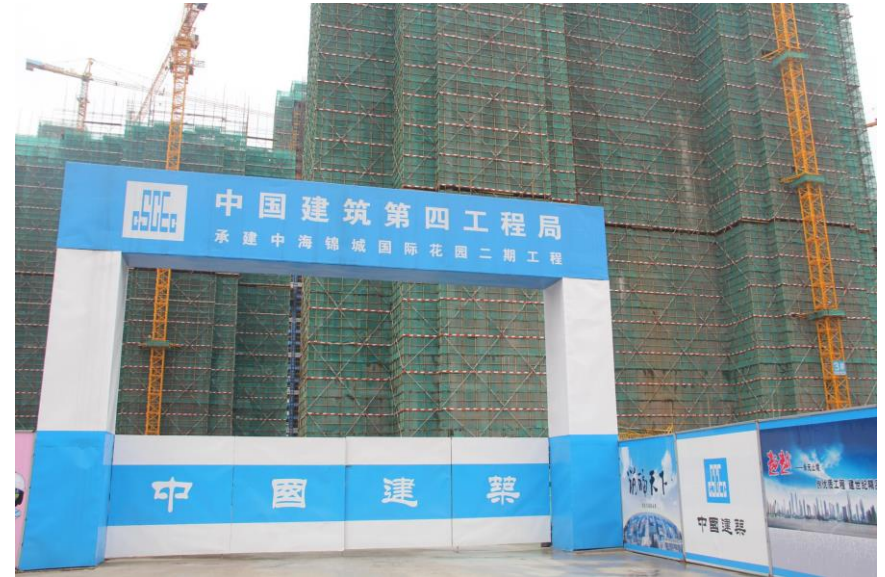
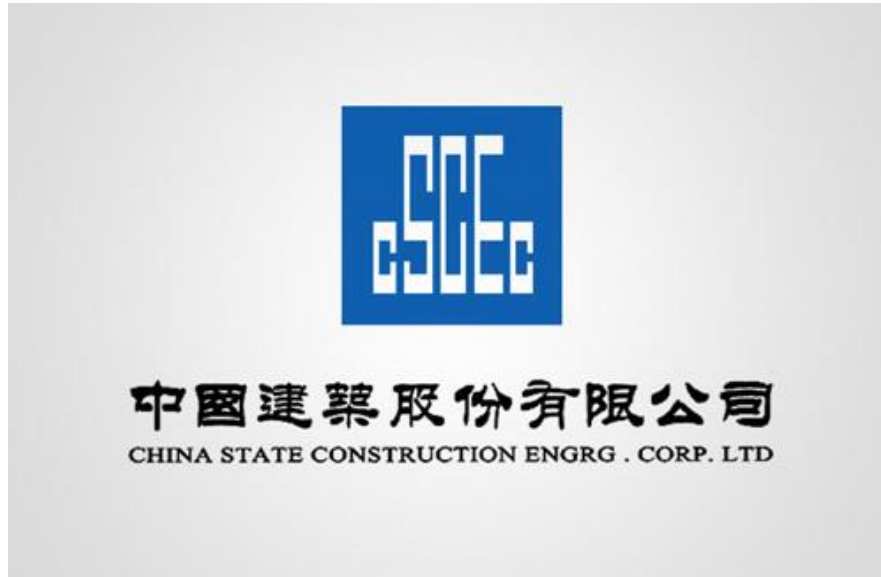


2-1. Raw material supplier----Asia Aluminum Group.

2-2. Raw material is good enough to guarantee our aluminum formwork is reliable and stable strongly.

2-3. All new aluminum ingots are used, we never use returned material.

2. Aluminum Formwork / 2-2 Our advantages----3



- 3-1. Aluminum formwork supplier designated by CSCEC 4th.
- 3-2. Our formwork is the most suitable system for workers
- 3-3. Our formwork is the most suitable for engineering use of.

2. Aluminum Formwork / 2-2 Our advantages----4



- 4-1. Many other real estate companies cooperate with us.
- 4-2. Many times cooperations, stable friendly relationship.

2. Aluminum Formwork / 2-2 Our advantages----5



5-1. Ability to undertake foreign projects.

5-2. Exporting to Venezuela, Malaysia, Indonesia, the Philippines, Cambodia, India, Israel, Pakistan and other developing countries.

2. Aluminum Formwork / 2-3 Typical projects sharing



Project name: Overseas Glorious City

Project general situation: 14 residential buildings / 33 floors

Covered area: 58000m²

Formwork usable area: 495,000m² (1900/sets 4 sets)

2. Aluminum Formwork / 2-3 Typical projects sharing



Project name: HuaRun 24 City

Project general situation: 4 residential buildings / 48 floors

Covered area: 145,000m²

Formwork usable area: 307,200m² (1600/sets 1 sets)

2. Aluminum Formwork / 2-3 Typical projects sharing



Project name: South America High-rise Apartment

Project general situation: 20 residential buildings / 10 floors

Covered area: 258000m²

Formwork usable area: 374200m² (1871/sets 1 sets)



Email: rdalformwork@gmail.com

Tel: 0757-63813070

Office Address:

**907 & 1505-1507 Building 6 Area A, Hao Science Park, Guicheng
Nanhai Foshan City, Guangdong Province, China.**

Factory Address:

**(Navigation direct search"佛山市润鼎金属制品有限公司"
can arrive easily)**

You can learn more from:

web site

Wechat Official Accounts

www.rdalformwork.com

