

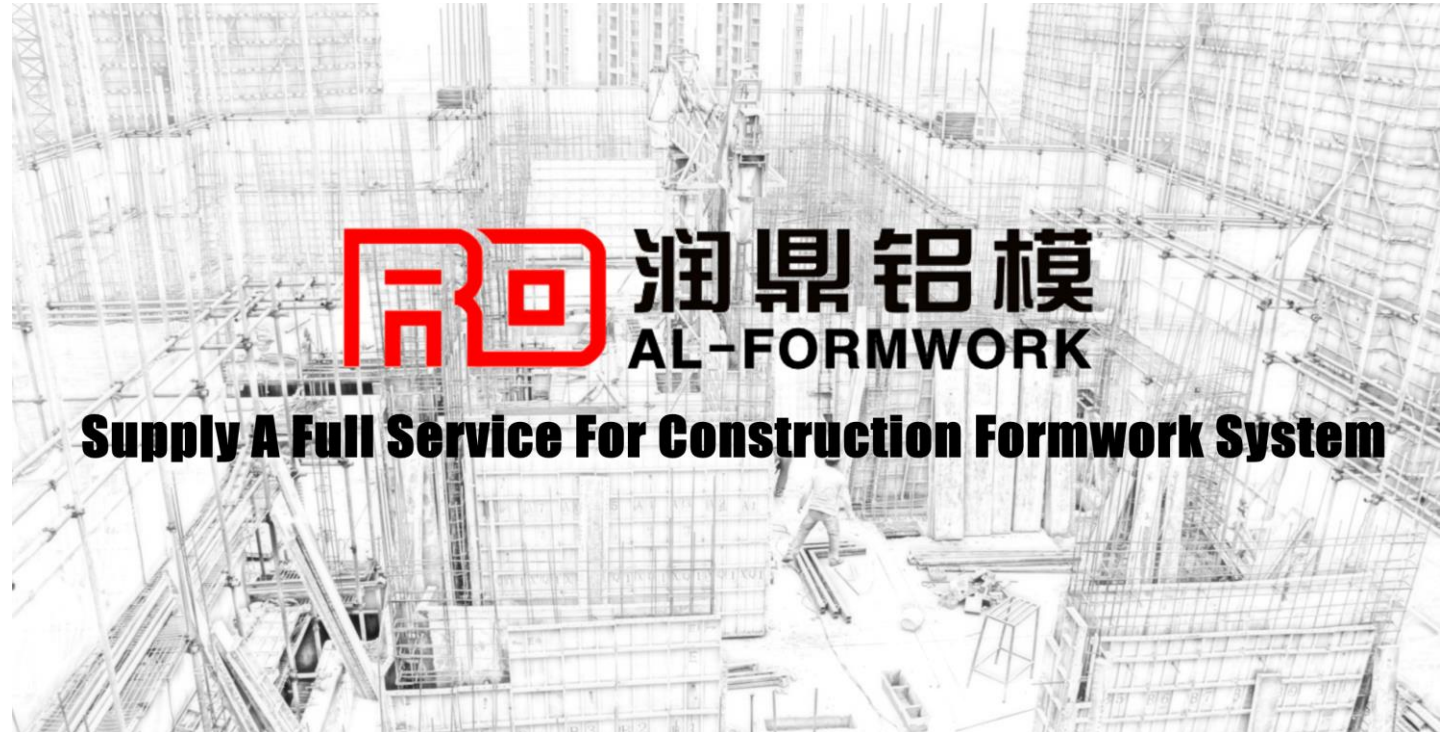


润鼎铝模
AL-FORMWORK

Plastic Formwork

CONTENTS

- 1- Plastic Formwork Description
- 2- Cost Advantage
- 3- Pre-assemble Workshop
- 4- Construction site
- 5- Concrete Surface
- 6- Cooperative Plan
- 7- Attentions



Description

Plastic Formwork -Glass Fiber

Average weight: 16kg/m²

Turnover times: 80

Sheet thickness: 5mm

Side sealing plate thickness:
12mm

Apply to Rod tie fasten
system

Dowel pins diameter: 16.5mm

***Demolding agent depend
on customer required.***



Standard Dimension

200 x 1200 x 65 mm

600 x 1200 x 65 mm

300 x 600 x 65 mm

Updating more sizes...



There are 3 kinds of size of glass fiber plastic formwork could be replaced 50% panels of one set of al-formwork system.

Description



Plastic Formwork -Carbon Fiber

Average weight: 15kg/m²

Turnover times: 150

Sheet thickness: 6mm

Side sealing plate thickness:
10mm

Apply to Rod tie fasten
system

Dowel pins diameter: 16.5mm

***Demolding agent not
requirement.***

Plastic Formwork -Carbon Fiber

150 x 600 x 65 mm

200 x 600 x 65 mm

250 x 600 x 65 mm

300 x 600 x 65 mm

400 x 600 x 65 mm

500 x 600 x 65 mm

600 x 600 x 65 mm

400 x 500 x 65 mm

400 x 700 x 65 mm

400 x 800 x 65 mm

400 x 1200 x 65 mm

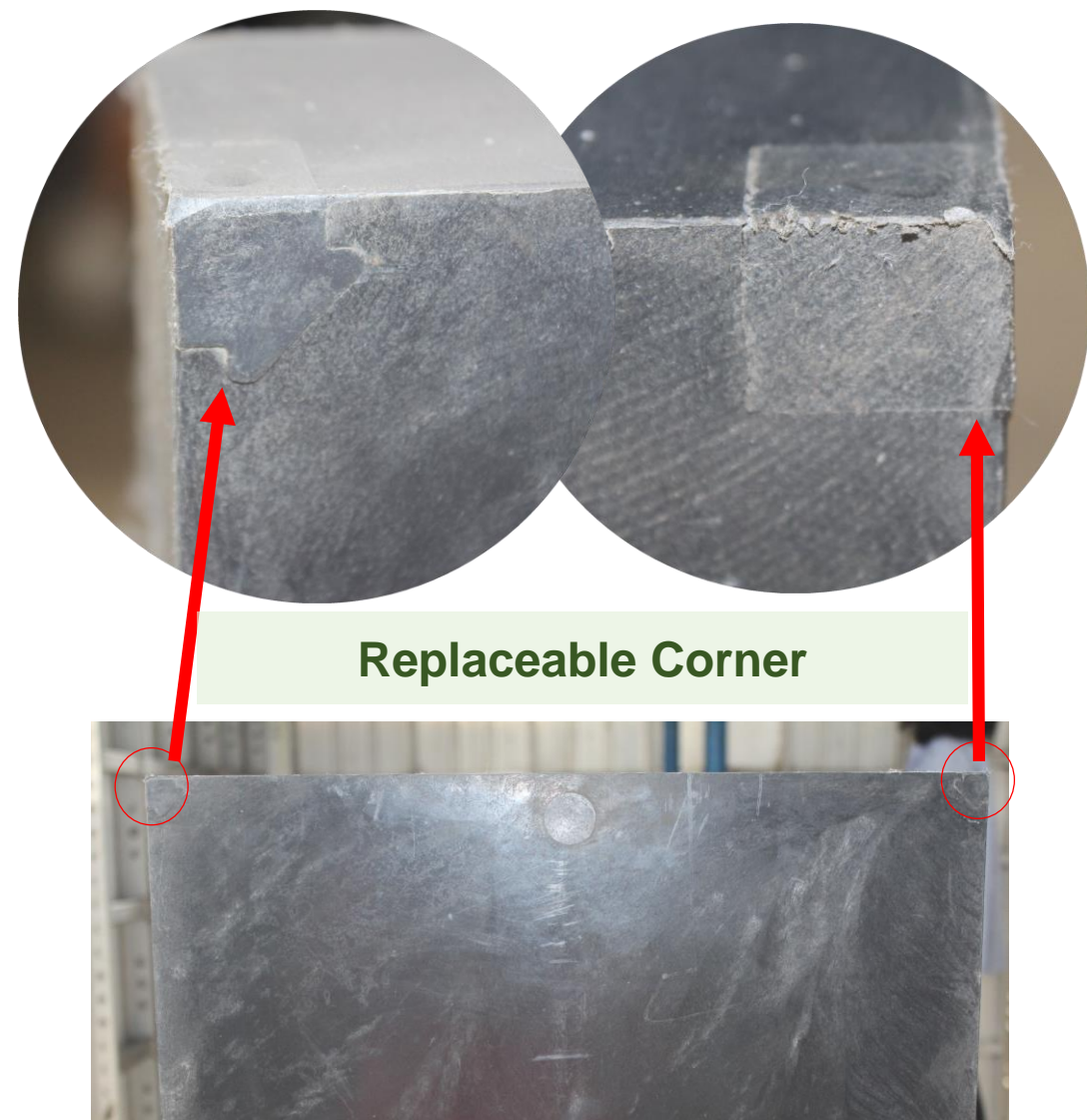
600 x 1200 x 65 mm

60 x 65 x 65 mm

Carbon fiber plastic
formwork panels are
upgrading and which
need to be innovated,
***Not for sell now,
please wait...***

Anti-collision Designed

Only carbon fiber plastic formwork have anti-collision designed. And panel corners could be replaced if broken.



Cost Advantage - 1

In generally, there are 60-80% of standard formwork panels in one typical floor project. Let's an example as below. If you only buy the plastic formwork, please refer to your al-formwork unit price.

Example: 10,000m² formwork areas, 70% standard formwork, 30% non-standard formwork.

I - Aluminum formwork system, USD \$135/m²

Al-formwork value : $135 \times 10,000 = \text{USD } \$1,350,000$

30% Residual value of al-formwork: $1,350,000 \times 30\% = \$ 405,000$

COST: $1,350,000 - 405,000 = \$945,000$

II- Aluminum + Plastic (**Carbon fiber**) formwork system,

Aluminum: $\text{USD } \$135/\text{m}^2 \times 3,000 \text{ m}^2 = \$405,000$;

Plastic: $\text{USD } \$78/ \text{m}^2 \times 7,000 \text{ m}^2 = \$546,000$;

Subtotal : $405,000 + 546,000 = \text{USD } \$951,000$

30% Residual value of al-formwork: $405,000 \times 30\% = \$121,500$

Residual value of Plastic form: $\$6/\text{m}^2 \times 7000 = \$ 42,000$

Residual value Subtotal: $121,500 + 42,000 = \$163,500$

COST: $951,000 - 163,500 = \$ 787,500$

Average unit price: USD \$95.1/m²

SAVE: USD \$ 157,500

Cost Advantage -2

Now, RD only able to provide glass fiber plastic formwork to the market and just have 3 sizes. So, the using rate of standard formwork just 50%. If you only buy the plastic formwork, please refer to your al-formwork unit price.

Example: 10,000m² formwork areas, 50% standard formwork, 50% non-standard formwork.

I - Aluminum formwork system, USD \$135/m²

Al-formwork value : $135 \times 10,000 = \text{USD } \$1,350,000$

30% Residual value of al-formwork: $1,350,000 \times 30\% = \$ 405,000$

COST: $1,350,000 - 405,000 = \$945,000$

II- Aluminum + Plastic (Glass fiber) formwork system,

Aluminum: $\text{USD } \$135/\text{m}^2 \times 5,000 \text{ m}^2 = \$675,000$;

Plastic: $\text{USD } \$68/\text{m}^2 \times 5,000 \text{ m}^2 = \$340,000$;

Subtotal : $675,000 + 340,000 = \text{USD } \$1,015,000$

30% Residual value of al-formwork: $675,000 \times 30\% = \$202,500$

Residual value of Plastic form: $\$3.5/\text{m}^2 \times 5000 = \$ 17,500$

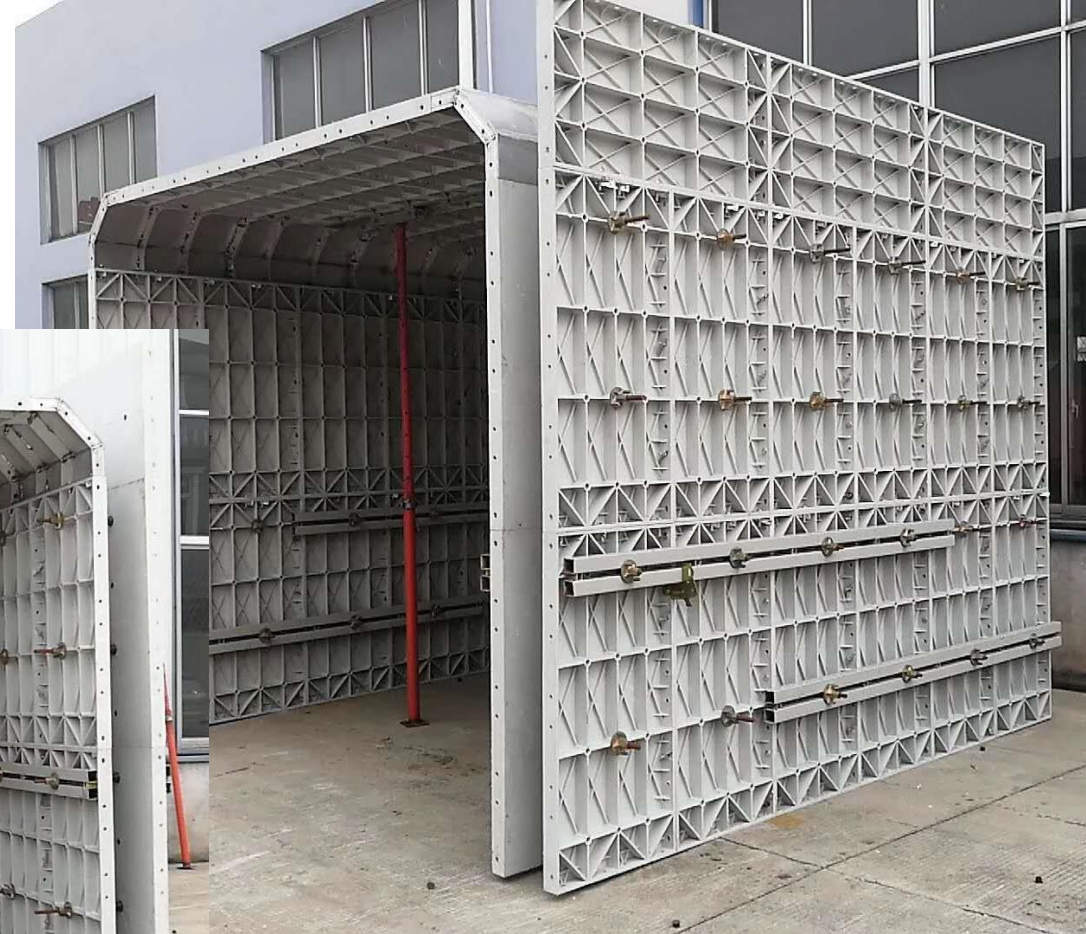
Residual value Subtotal: $202,500 + 17,500 = \$220,000$

COST: $1,015,000 - 220,000 = \$ 795,000$

Average unit price: USD \$101.5/m²

SAVE: USD \$ 150,000

Pre-assemble Workshop



Glass Fiber
Plastic Formwork
&
Aluminum Formwork



Pre-assemble Workshop



**Carbon Fiber
Plastic Formwork
&
Aluminum Formwork**



Construction Site - Glass fiber plastic form



Combination Formwork System

Please search 'RD Al-formwork' on [YouTube](#), [Facebook](#), [LinkedIn](#) and follow, will see more construction videos.

Construction Site - Glass fiber plastic form



Combination Formwork System

Please search 'RD Al-formwork' on [YouTube](#), [Facebook](#), [LinkedIn](#) and follow, will see more construction videos.

Concrete Surface - Glass fiber plastic form



Demolding agent is one of important factor to guarantee quality of concrete surface.

Concrete Surface - Glass fiber plastic form



Demolding agent is one of important factor to guarantee quality of concrete surface.

Cooperative Questions

Q: What about the quantity of standard plastic formwork?

- 1- Please send your full set drawings to us;
- 2- If you only want to buy plastic formwork from us, please tell us areas of estimate standard formwork and provide your full set drawings to us at the same time. Then, we will give you primary areas of plastic formwork.

Q: How to pre-assemble?

- 1- Send plastic form samples to construction site and try.
- 2- If your construction team is experience in al-formwork system, we suggest you do the trail pre-assemble at construction site firstly.
- 3- Or your staff come to our factory to learn and study assemble and dismantle the formwork system.

Q: Do you know imported rules of your country for plastic formwork/ materials?

- 1- Every country have their own imported requirement of plastic product. If you never import plastic construction material, please inform us.
- 2- If you are clearly plastic imported rules of your local, please try to tell us your requirement in detail.

More question, please try to contact us directly.

Attentions

- Fire prevention measures must be good at work site. RD plastic formwork with flame retardant material, but it must stay far away from the fire.
- Forbid people from standing on the plastic formwork at any circumstances, because plastic material is very easy to be slipped.
- No welding.
- Plastic formwork are needn't mark numbers on.
- Only suit to Rod Tie Fasten System.

Hope our profession will help you!

Email: rdalformwork@gmail.com

Tel: 0757-63813070



润鼎铝模
AL-FORMWORK

Office Address:

907 & 1505-1507 Building 6 Area A, Hao Science Park,
Guicheng Nanhai Foshan City, Guangdong Province,
China.

Factory Address:

(Navigation direct search"佛山市润鼎金属制品有限公司"
can arrive easily)

Website:

www.rdalformwork.com