



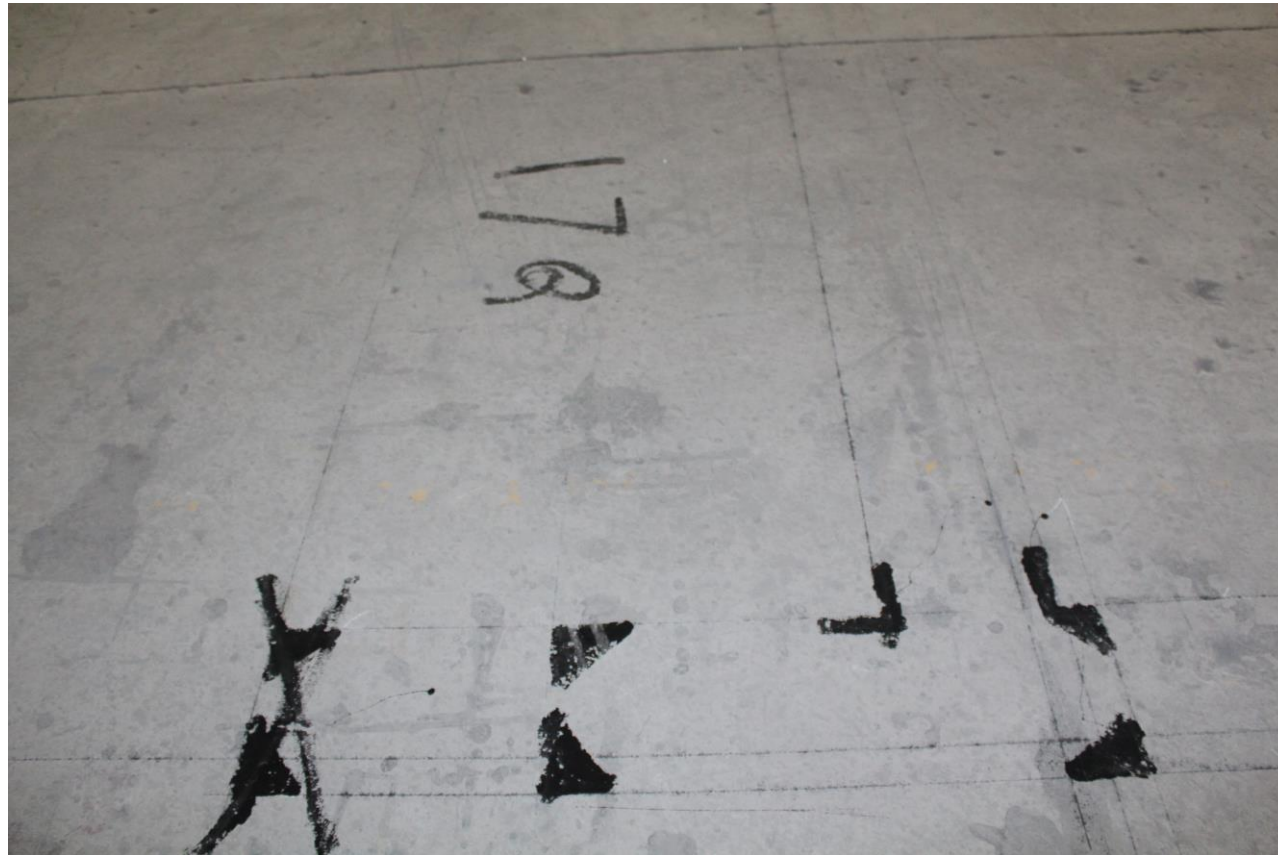
## 铝模板局部装拼流程简要说明 Installation Introduction

---- for the Structures of Aluminum Formwork System



## 01- 放线标高，绑扎好钢筋

Setting structure lines & elevation; Bind steel rebars





## 02- 墙柱的线管线盒预埋 (即水电预埋) Embedded the wire boxes and set up plumbing.





## 03- 按照模板区域和顺序摆放、有序传递

Placement the formwork components according to its marking numbers and placing areas when arrived. Passing them in sequence.





# Installation of Wall & Column Structures 墙柱结构安装

**04-** 涂刷脱模剂，墙的内阴角开始依次展开安装内墙（柱）模板，随后安装对拉螺杆（或拉片）；为了防止模板滑落，先临时借助钢管支撑；接着安装外墙模板。

Coating demolding agent; Start with Wall Internal Corner and erect Internal Wall panels, then fix into Screw rods (Flat ties); For prevention the formwork falling down, try to use steel props as supporting. Later set up the External Wall components.





## 05- 安装钢背楞（铝模板装配图会说明安装位置）

Install steel walers (Set up the steel reinforce walers are displayed on Al-formwork diagrams).





## 06- 安装斜支撑（铝模板装配图会说明安装位置） Set up the Steel Sway Brace (Placed the sway brace are depended on Al-formwork diagrams).



- 06-** 检查标高、垂直度和平整度，调整校正  
Inspection the elevation, vertical and leveling of Wall & Column structures, reasonable adjustment & correction.
- 

## Dismantle of Wall & Column Structures

### 墙柱结构拆卸

拆模审批  
Dismantle Approval

斜支撑拆卸  
Removed Sway Brace

背楞拆卸  
Removed Steel  
Walers

墙柱模板拆除  
Dismantle Wall &  
Column formwork

对拉螺杆拆卸  
Removed Screw robs  
(Flat tie)

墙柱混凝土质量验收  
Check Concrete Quality  
Before Acceptance



# Installation of Beam & Slab Structures 梁和楼面结构安装

## 01-

安装梁底模板。提示：可先将梁底模板部分进行预拼装---梁底板，早拆头，梁阴角模（梁与墙的阴角模板）

Set up Beam Soffit Panels. Tips: Pre-assemble the Beam Soffit, Beam Prop Head & Beam Internal Corner as a part at first.





# Installation of Beam & Slab Structures 梁和楼面结构安装

- 02-** 安装梁侧模板，放入对拉螺杆（提示：超高梁需要额外添加背楞加固）  
Assemble the Beam Side Panels, then fix Screw rod in. (**Tips:** Extra steel waler for exceed high beam structure)





### 03-

安装楼面阴角，又名楼面C槽；楼面阴角指的是楼面板与墙（柱）的连接位置。

Install Slab Internal Corner. (Abbreviation: C form)

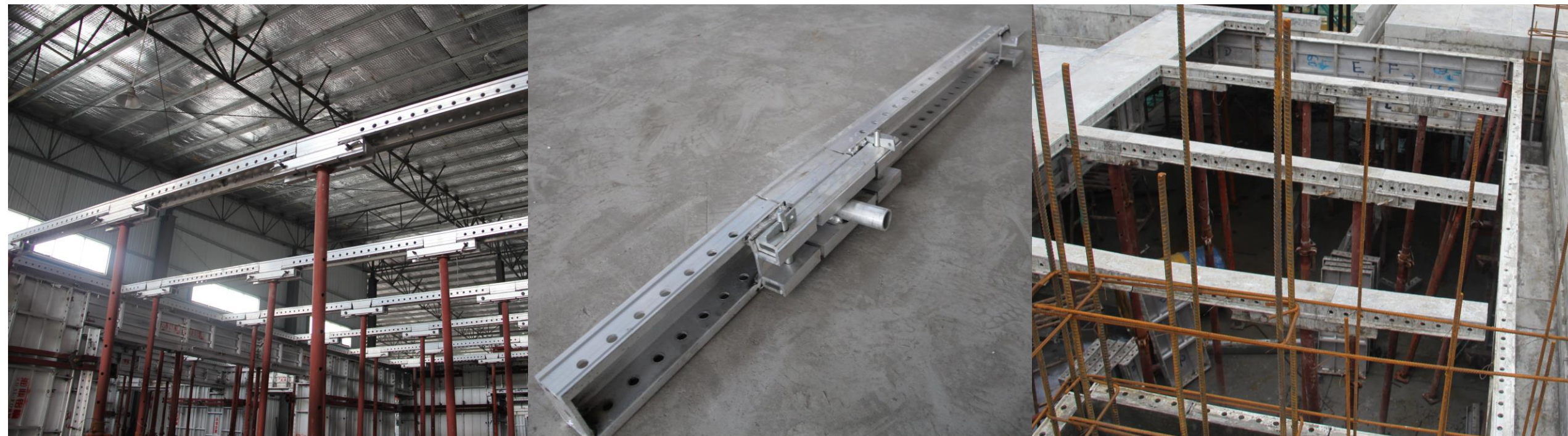




## 04-

组装楼面龙骨（由较小的中梁板，梁端板，早拆头组合而成）

Assemble the Keel structure of Slab. (Keels are made of the smaller Middle beam, End beam and Prop head)





## 05- 依次安装楼面模板，并涂上脱模剂

Put on the Deck formwork panels in sequence, then coating on demolding agent.





### 06- 检查标高、垂直度和平整度，调整校正

Inspection the elevation, vertical and leveling of Beam & Slab structures, reasonable adjustment & correction.





# Dismantle of Beam& Slab Structures

## 梁楼面结构拆卸

拆模审批  
Dismantle Approval

梁底模拆卸  
Remove Beam Soffit  
formwork

对拉螺杆拆卸  
Removed Screw rods

梁侧模板拆除  
Dismantle Beam Side  
formwork

楼面龙骨拆卸  
Removed Keels

楼面板拆卸  
Removed Deck  
panels

拆除C槽  
Dismantle C form

检查混凝土质量  
Check Concrete  
Quality

支撑头拆除审批  
Dismantle Approval  
for Support head

支撑头拆除  
Remove Support head



# Installation of Kicker Formwork (K panel) K板及阳台线安装

01-

K板，指的是外围导墙板。有连续垂直模板的地方，如电梯井，外墙面，必须使用K板围城一周，并且作为上一层垂直模板的连接组件。这种模板带有的洞口呈椭圆形。

K Panel, where is continue vertical wall, e.g. Lift shaft, External face of building. And as the connecting component for the last level of vertical formwork. K panel with Oval-shaped hole on it.





# Installation of Kicker Formwork (K panel) K板及阳台线安装

02-

椭圆形的螺栓孔，搭配专用的螺栓螺母，浇筑后，可通过螺栓来调节导墙板的水平度，同时也可以控制模板的垂直度。

It have special Screw nut to fix Oval-shaped hole. After concrete casting, the horizontal of external wall by adjustment the K panel screw, controlling the vertical of formwork at the same time.



Special Screw



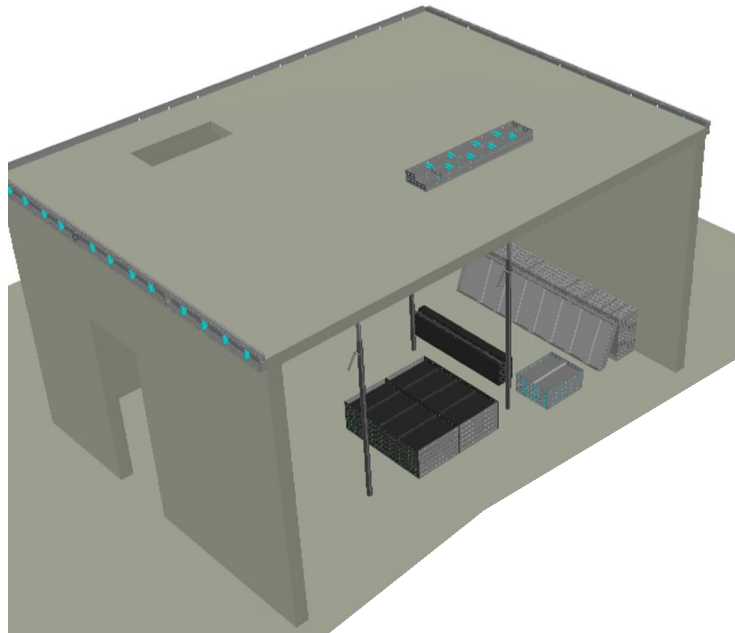


# Notice: Dismantle of Kicker Formwork K板拆除须知

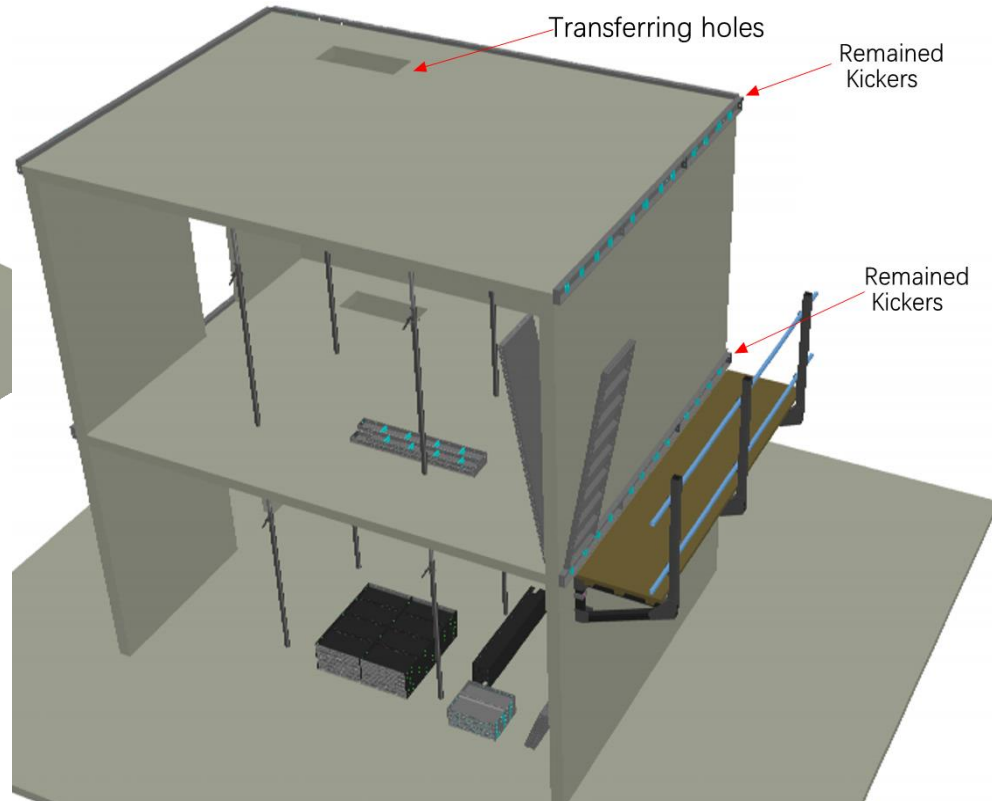
**03-**

第一层浇筑混凝土后不能拆除，第二层浇筑后也必须安装K板，直到第三层的模板安装完毕才把第一层的K板拆除并且安装到第三层上。

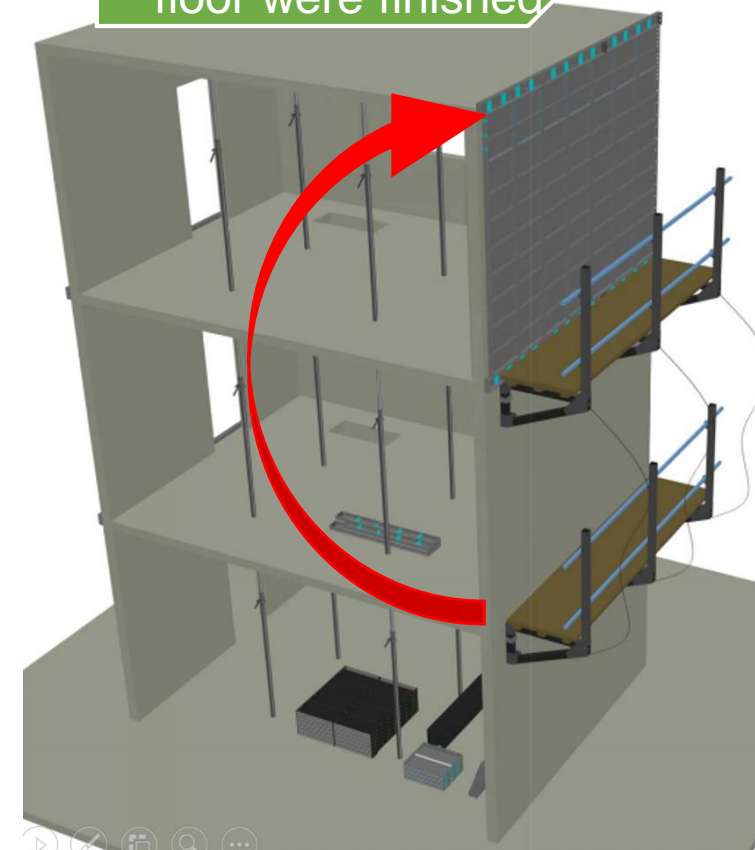
Remained K panel  
when finished  
concrete casting of  
the 1<sup>st</sup> floor



Remained K panel  
even if finished  
concrete casting of  
the 2<sup>nd</sup> floor



Move the 1<sup>st</sup> floor of  
K panels to the 3<sup>rd</sup>  
floor until installation  
formwork of the 3<sup>rd</sup>  
floor were finished





**01-**

先安装楼梯板梁侧的剪力墙模板——并安装对拉螺杆——楼梯墙板调校平直

Install the wall components of staircase and fix in screw rods, adjustment and correction later.



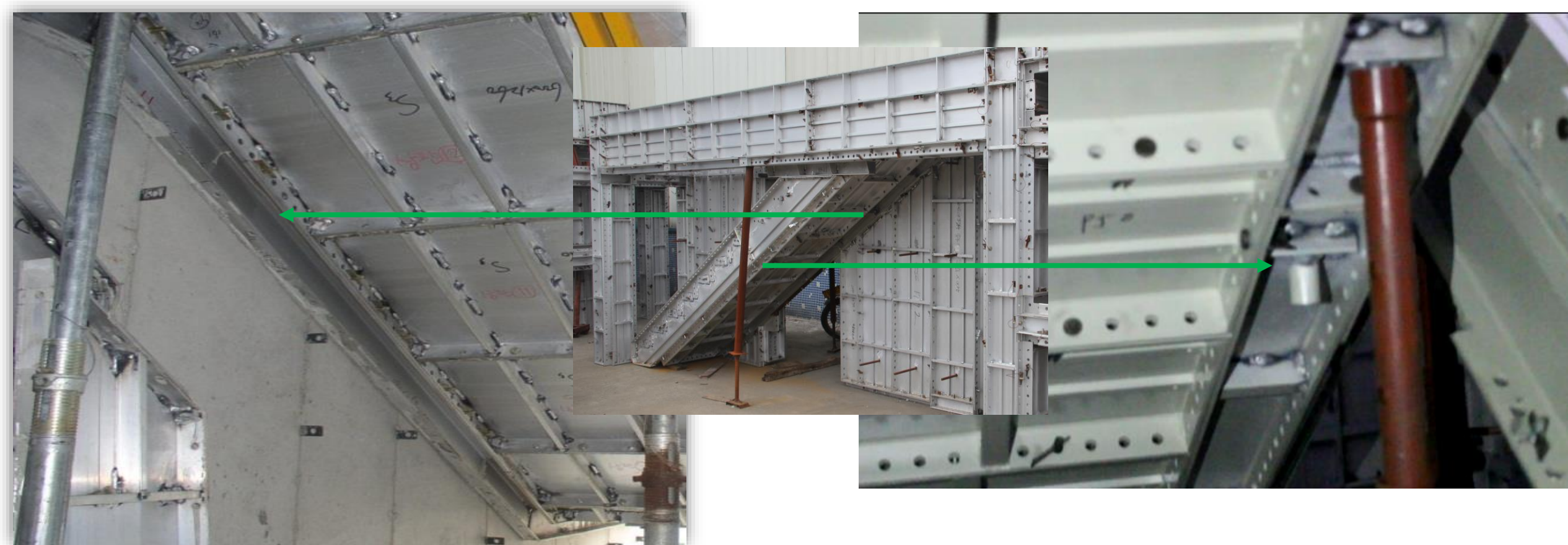


# Installation of Staircase 楼梯结构安装

**02-**

安装斜板与墙板链接的C槽（阴角）及斜板龙骨，含支撑——调校设计位置

Install C form (Internal corner) where connected with wall formwork and Keels , set up support props at the same time. Then, adjustable & correct the placement.





## 03-

安装斜板——底板——绑扎楼梯钢筋

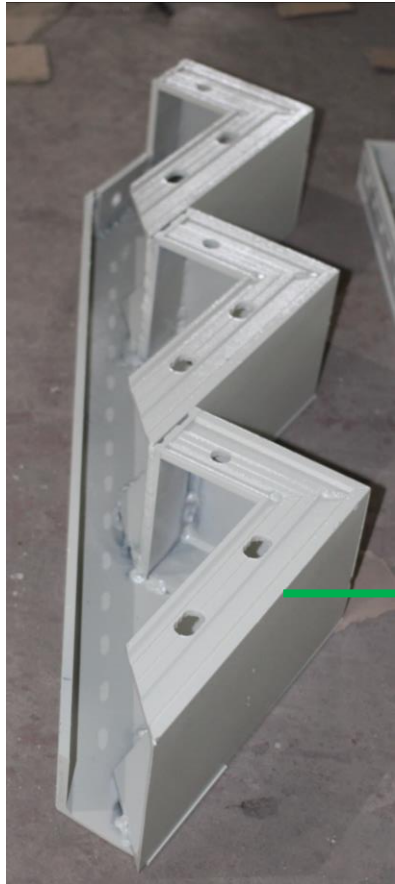
Install the stair Side formwork and Deck panels of staircase. Then, start to bind steel rebars for stair.





## 04- 安装狗牙板——踏步板

Install the Pitch board formwork and Step formwork.





05-

调校楼梯模板依照设计设置，安装背楞

Adjustment & correction the stair formwork refer to designed, then fix on the steel fasten walers.



楼梯正上方和正下方必须  
安装背楞加固  
Add steel walers on the  
front and the bottom of  
staircase.



### Notice-

绑扎钢筋完毕才安装吊模和反梁

Sunken formwork and Suspended formwork should be set when finished all of steel rebar installation of the slab.





## Notice-01

铝模板安装前就要做好墙柱管线预埋，将开关盒内装填泡沫并且用胶带密封，与钢筋绑紧，预埋工作完毕才开始安装墙柱铝模板。

Must be finished the wire and pipeline pre-embedded works of wall & column structures before install aluminum formwork panels. Switch boxes should be bound with steel rebars strictly, be filled full with polyfoam and sealed tightly by tape.





## Notice-02

铝模板全部安装完成后，进行梁板，楼板管线预埋。梁预留管线位置已经确认，在固定位置开口，不可再移动；楼板预留用螺丝钻进铝模板固定好。

Start to pre-embedded works on the Slab & Beam structures when all of aluminum formwork has been installed completely. Embedded position of beams has been confirmed, it cannot be removed once open the holes on it. The holes on slab formwork should be fasten by screws.





- ✓ 销钉是否按要求打满并且紧固  
Check the pins were fixed and fasten as requirement.
- ✓ 检查梁底模板是否水平，是否垂直，可通过调节支撑头来校正  
Check the vertical & horizontal of beam soffit formwork; Correction by adjustable support props.
- ✓ 固定顶盒是否牢固  
Confirmation the transferring boxes were fasten.
- ✓ 平整度、垂直度、顶板标高、截面尺寸检查  
Inspection the dimension of Horizontal, Vertical, Section and the Elevation of Slab.
- ✓ 用激光水准仪对齐标高控制线，在观察激光是否与墙柱上的标高控制点重合  
Alignment lines of level by using Laser Level machine; Confirmation the laser coincide with the elevation position of Wall & Column.
- ✓ 用卷尺复核墙体垂直度、平整度  
Double check the vertical and flatness of wall by tape.
- ✓ 外墙面垂直用线锥和卷尺复核  
Double check the vertical of External wall by using plummet and tape.



# Aluminum Formwork Installation Notice

## 铝模板检查校正须知



- ✓ 墙体平整度和水平度检查及校正
- ✓ Inspection the Vertical & Leveling of Wall.



- ✓ 天花平整度检查及校正
- ✓ Check the Elevation of floor.



**Email: [rdalformwork@gmail.com](mailto:rdalformwork@gmail.com)**

**Tel: 0757-63813070**

**Office Address:** 907 & 1505-1507 Building 6 Area A, Hao Science Park, Guicheng Nanhai Foshan City, Guangdong Province, China.

**Factory Address:** (Navigation direct search"佛山市润鼎金属制品有限公司" can arrive easily)

**Website: [www.rdalformwork.com](http://www.rdalformwork.com)**