



润鼎铝模  
AL-FORMWORK

*What is **RD** Al-Formwork*



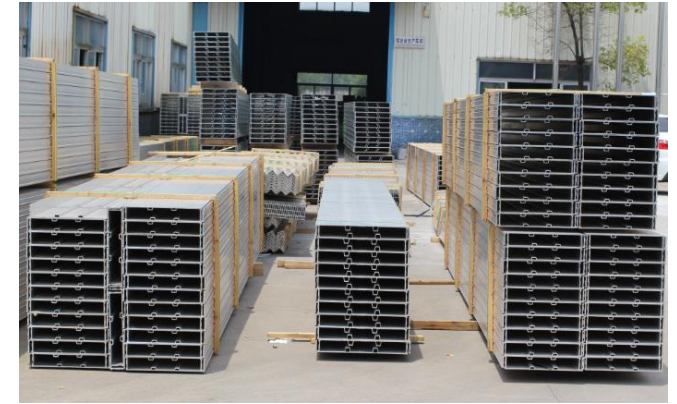
# Brand New Aluminum Alloy Material



Aluminum alloy ingots



Aluminum alloy Billets



Aluminum formwork profiles

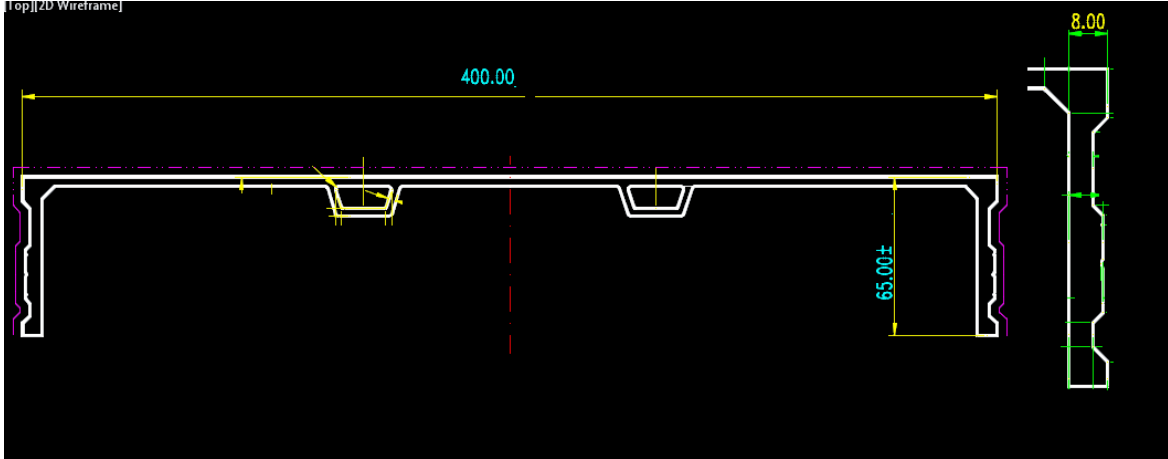


Aluminum formwork panels

***RD Al-Formwork*** adopt a brand new aluminum alloy material to produce Al-formwork panels.

Returned or wasted aluminum alloy materials are not allow to use.

# Al-formwork Profiles



According to the strength inspection, **RD Al-formwork profiles'** width 250/ 200/ 150/ 100/ 50mm without reinforcement designed, which are produced by aluminum extrusion machined at once time as well.



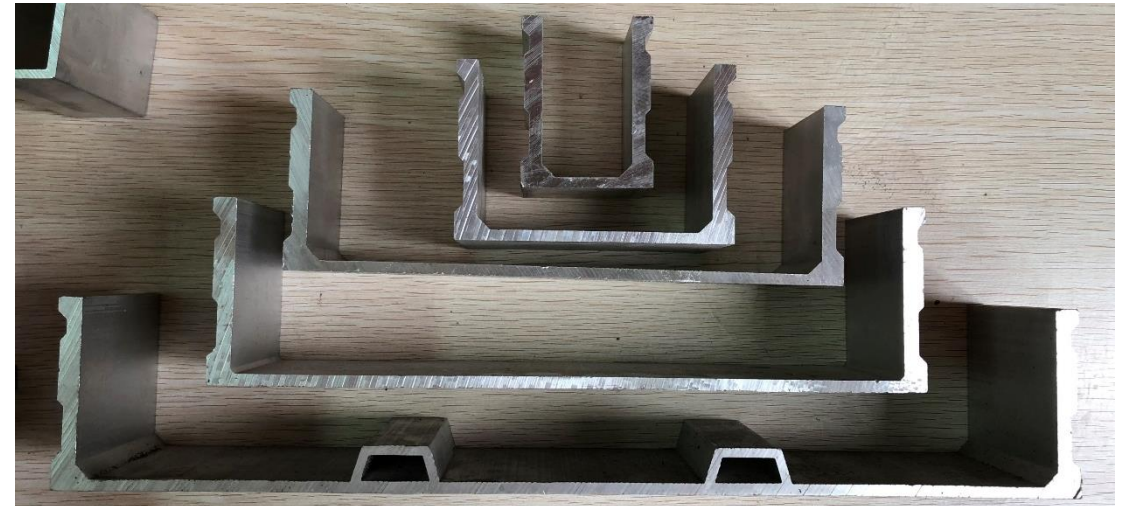
Sheet thickness: 5mm

Rail width: 8mm

Max width of panels: 500mm

**RD Al-formwork profiles'** width 300mm-500mm with *Trapezoid* reinforcement designed, which are produced by aluminum extrusion machined at once time.

These reinforce designed could increase al-formwork's strength, it is largely improve turnover times, the formwork profiles' production cost also are increased because of using the better extrusion equipment.





# Al-formwork Profiles

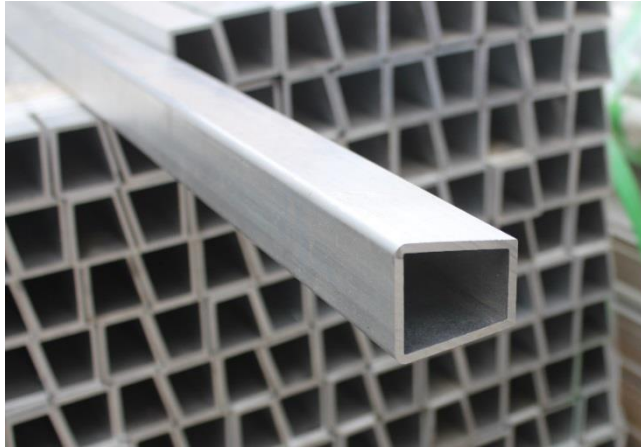
**RD** company never put two pieces of formwork profile and welded together as ONE piece of al-formwork panel, regardless of brand new Al-formwork or second-hand al-formwork, ***RD Al-formwork panels are always maintain unity.***



**Split joint al-formwork profiles are not ALLOW.**

# Al-Formwork Reinforce Materials

The most part of al-formwork are mainly used the shape of **Trapezoid** aluminum tube.

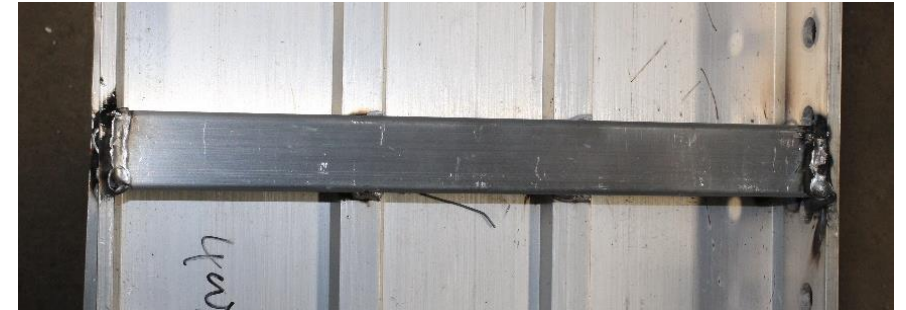
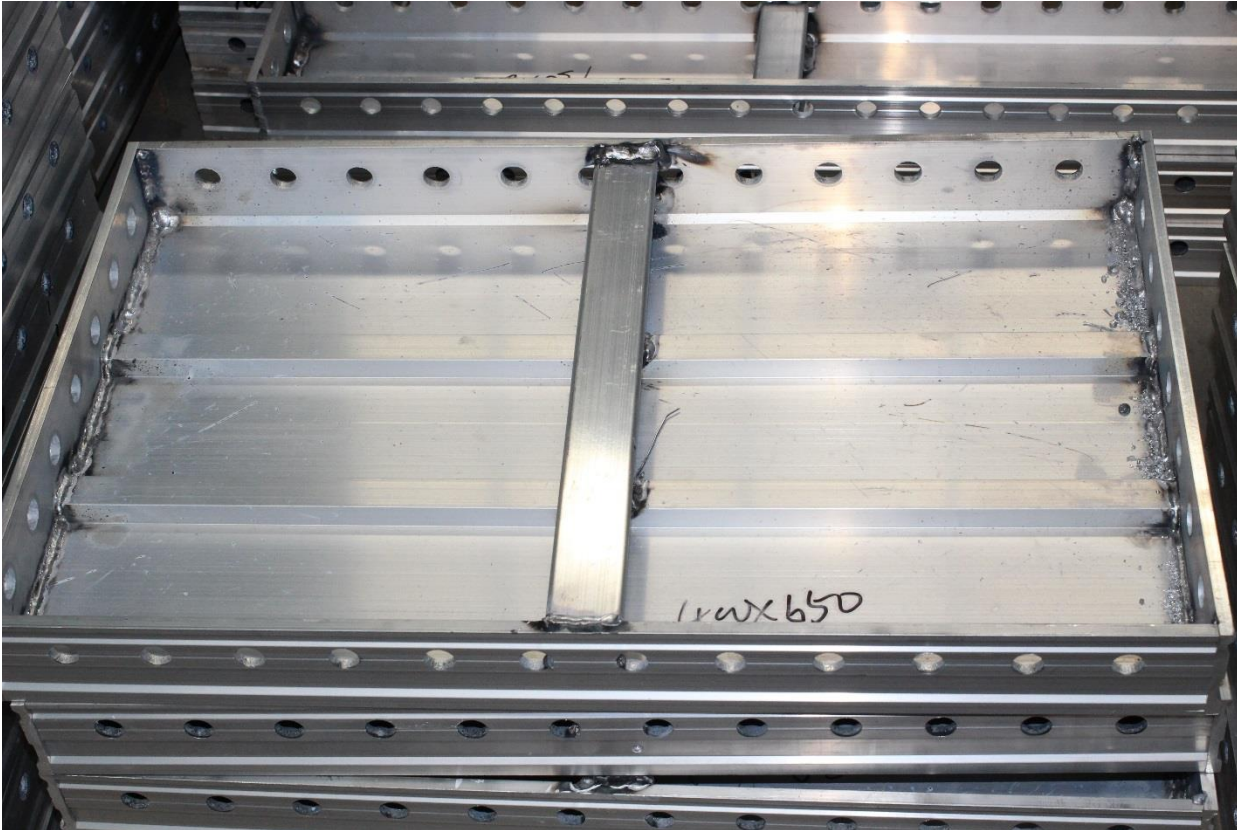


Such as the small components and non-standard panels are used **H** shape of aluminum bar.

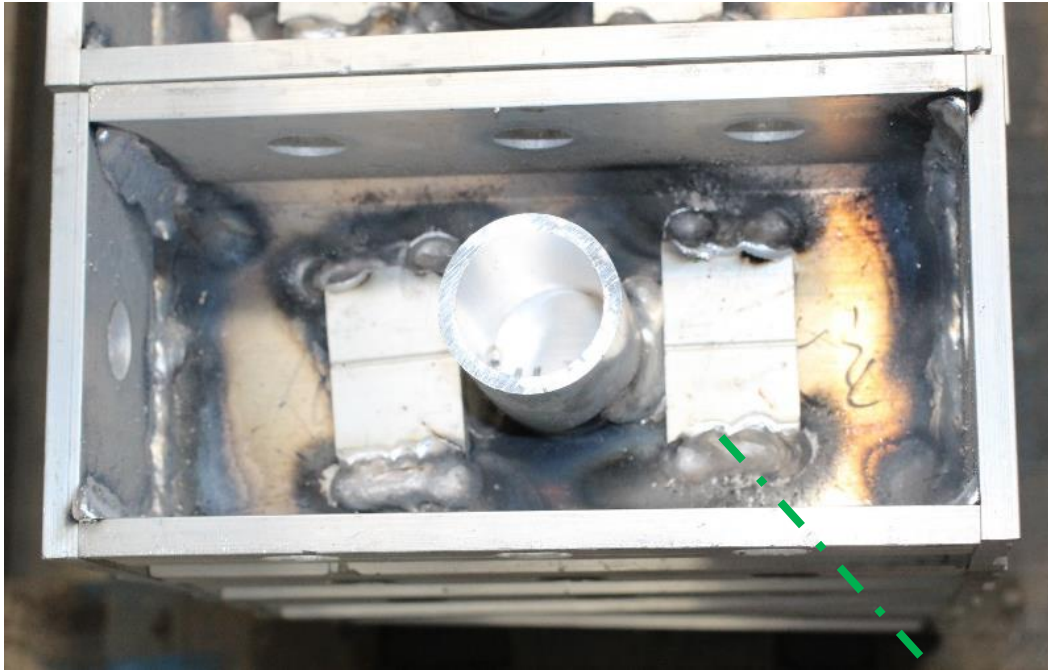


# Full Welding

The connection face between formwork profile and ended plate is fully welded.

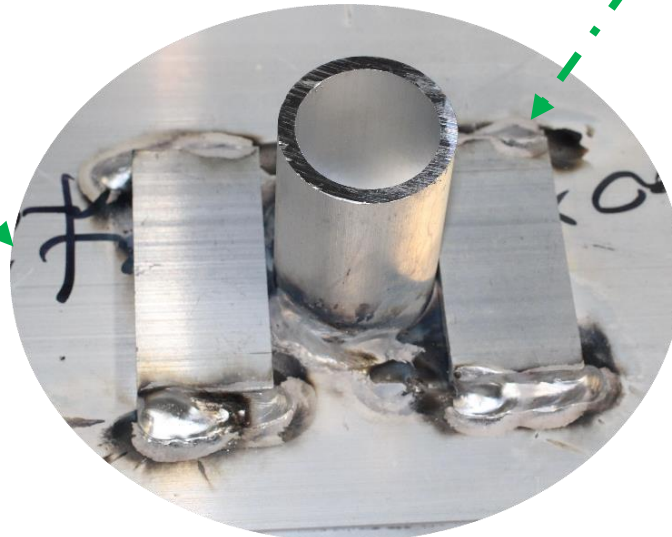


# Welding Technology



## Reinforcement welding

Prop head panels are added and welded reinforce plates on. To prevent al-formwork deformation and improve bearing loaded.





# Welding Technology



## Reinforcement welding

Corner panels are added and welded reinforce plates on. To prevent al-formwork deformation and improve bearing loaded.



# Weight

**RD** try the best to manufacture a high quality aluminum formwork panel and provide a good performance to our customer. From the aluminum alloy ingots, once extruded formwork profiles, reinforce materials to welding techniques with 100% conscientious attitude.

So our average weight of al-formwork about 22-25KG per square meter;  
For example, one piece of al-formwork 500mm x 2600mm which weight might arrive 28.6KG at least.

***RD company show you what are the aluminum formwork really made of.***





# Recycle Al-formwork

For our domestic construction projects, customer would buy 3 or 4 sets of al-formwork system from **RD factory**, so that clients could build 3 or 4 buildings at the same time. So, the reuse time for each set of al-formwork system generally arrive 90 times of one building. (This is a common example in Chinese construction project, just for reference)





# Recycle Al-formwork

- RD al-formwork products were used after 90 times as photos.
- Panels were still keep straight and the al-formwork corners without any deformation, because RD al-formwork with real good raw materials.
- Excellent bending resistance.



# Renovation Treatment -2<sup>nd</sup> hand Al-formwork

**RD factory** would recycle the aluminum formwork standard products which were used almost 100 times and will sell them as second-hand products after finish some rectification treatments.



1-Clean up the cements

2-Polished by high pressing machine



3-Rectification & alignment by leveling machine

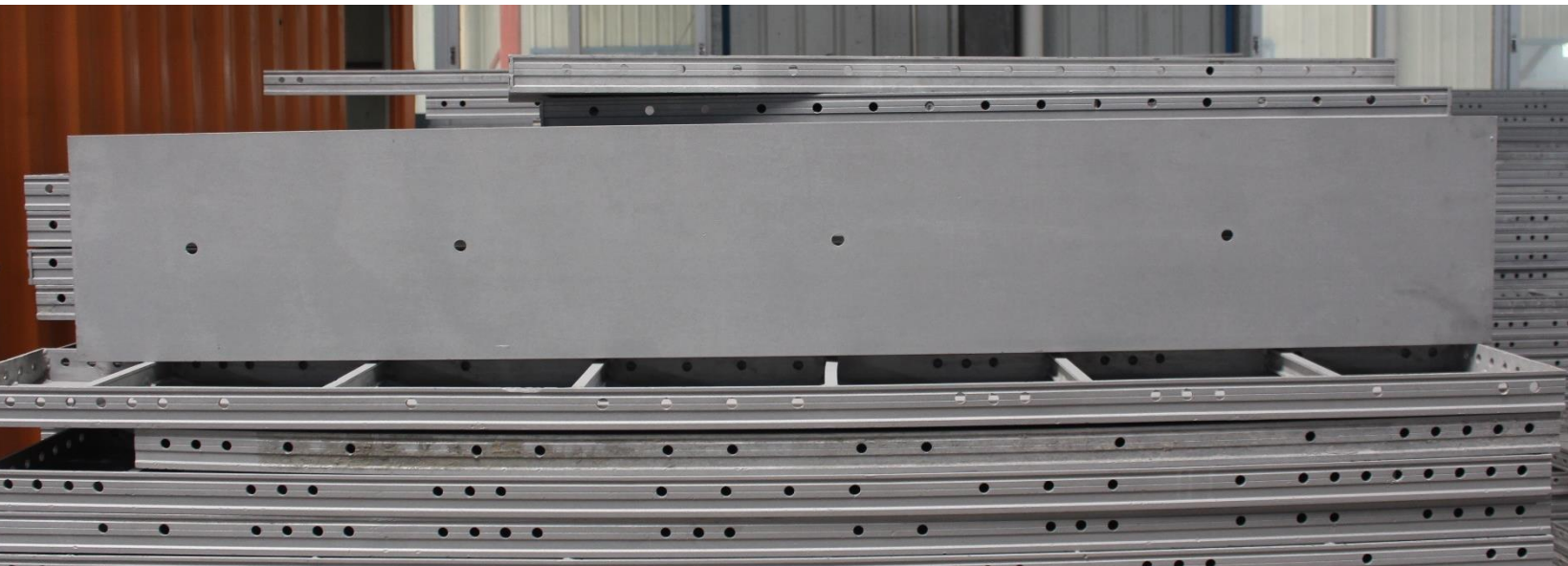
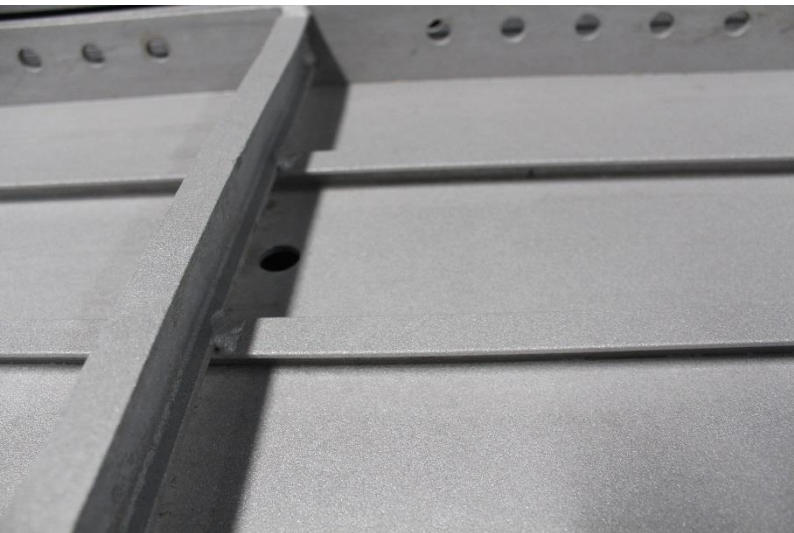
4- Coating



Please search 'RD Al-formwork' on [YouTube](#), [Facebook](#), [LinkedIn](#) and follow, will see more videos about 2<sup>nd</sup> hand al-formwork.



# New Surface Effect -2<sup>nd</sup> hand Al-formwork



Please search 'RD Al-formwork' on [YouTube](#), [Facebook](#), [LinkedIn](#) and follow, will see more videos about 2<sup>nd</sup> hand al-formwork.



# Second-hand Al-formwork Panels

Some of our customers love to buy **RD's** 2<sup>nd</sup> hand al-formwork standard panels, then they will combine with some new al-formwork system to use into their building projects, it could help customers largely save the building cost and provide a good concrete quality in the meanwhile.



Internal Corner



Prop Head



Wall End Panel



# Second-hand Al-formwork Panels

Please search 'RD Al-formwork' on [YouTube](#), [Facebook](#), [LinkedIn](#) and follow, will see more videos about 2<sup>nd</sup> hand al-formwork.



Beam Panel



Wall & Deck Panels



Soffit Corner



# Installation Effect -Trial assemble workshop

If use a brand new aluminum formwork system, installation effect should be look like very regularly and reinforce tubes are unity.



Please search 'RD Al-formwork' on [YouTube](#), [Facebook](#), [LinkedIn](#) and follow, will see more construction videos.



# Installation Effect -Trial assemble workshop

Assemble appearance **Beautiful & Tidy**



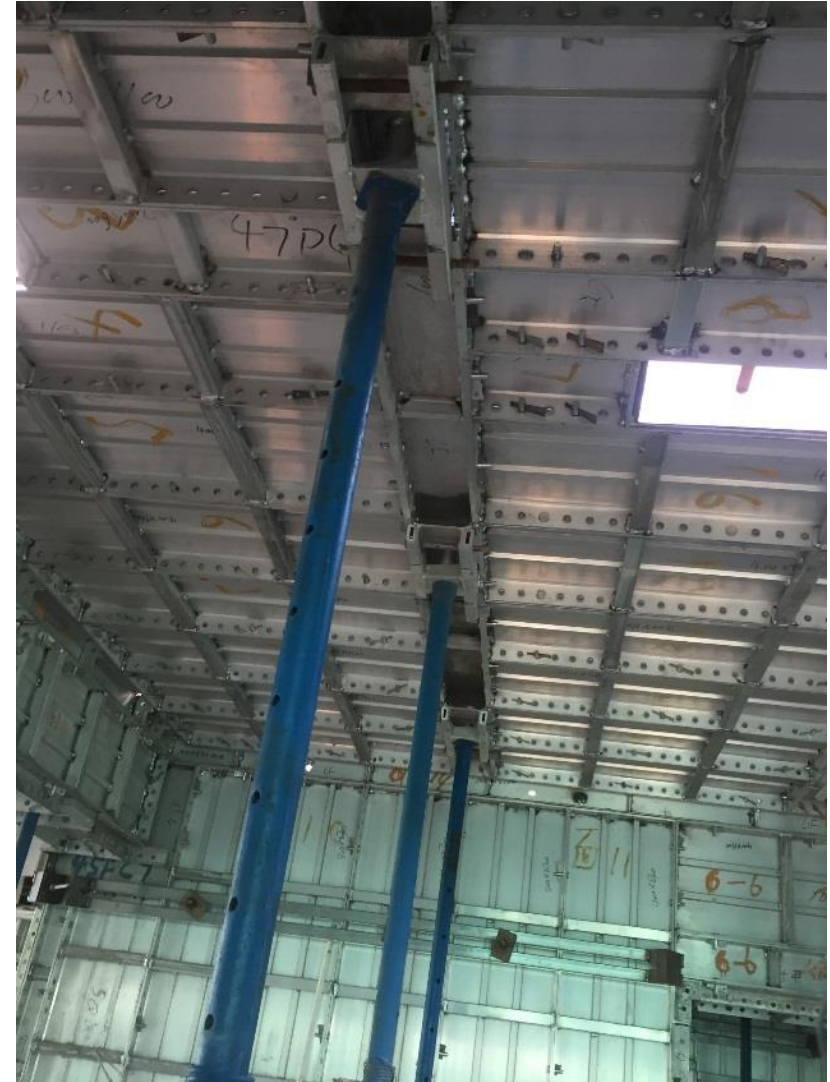
Please search 'RD Al-formwork' on [YouTube](#), [Facebook](#), [LinkedIn](#) and follow, will see more construction videos.



# Installation Effect -construction site



Wall Structure



Slab



# Installation Effect -construction site



Side of staircase structure



Column



# Installation Effect -construction site



Staircase structure



Beam & Slab



# Project Cases -Overseas Glorious City

The Glorious City from China Overseas Real Estate, located in the north side of Hai Ba road, Financial High-Tech Zone of Nanhai District, Foshan City, total land area is 199,472 sqm, a total 580,000 sqm construction area, Residential area of 522,356 sqm, commercial area of 29,954 sqm. The Glorious City project separate into 3 phases, totally 14 residential buildings, now the third phase of the project has been basically completed. The project construction scope of RunDing Company is to build standard floors for 11 buildings. The form of engineering structures are designed to be the Frame-Shear walls structure, with 3m standard height. The use area of aluminum formwork for this project is about 495,000 sqm.



Al-formwork areas: 495,000 square meters

# Project Cases -Qian Deng Lake

Qian Deng Lake No. One project from China Overseas Real Estate, located in 3rd Light Lake road, Nanhai District, Foshan City, total land area is 155,000 sqm, planning a build a total 580,000 sqm construction area, is surrounded by 26 high-rise apartment buildings. Project Phase III is going to build No.19-26 resident buildings, building height is 135.15m, all are 44-stories high-rise design, located in the west of the main project. The project construction scope of RunDing Company is to build standard floors for 19-21-23-25-26 buildings. The form of engineering structures are designed to be the Frame-Shear walls structure, with 3m standard height. The use area of aluminum formwork for this project is about 330,000 sqm. In order to achieve the quality requirements of the project, RunDing decided to use aluminum formwork from walls and columns in 2nd floor and slabs in 3rd floor for this project.

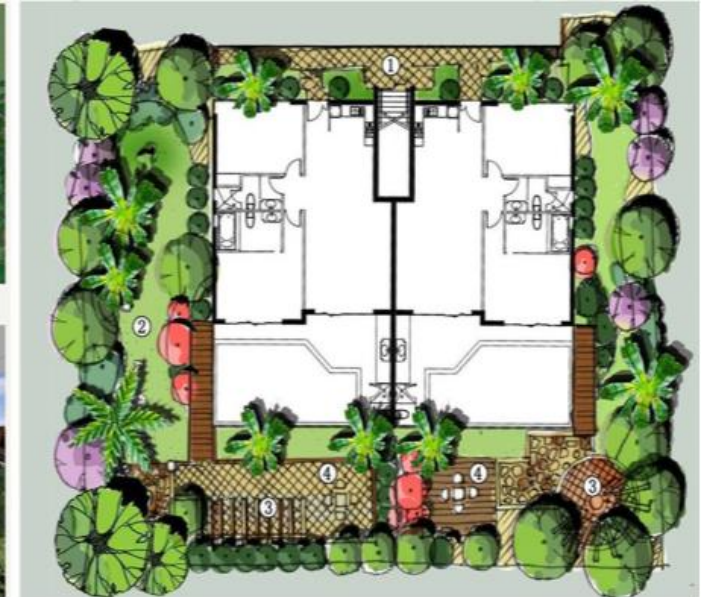
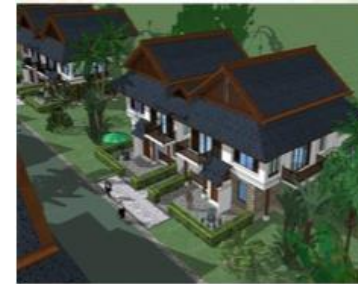


Al-formwork areas: 330,000 square meters



# Project Cases -Cambodia Holiday Paradise

Whitehorse is famous seaside resort city of Cambodia, it is doomed to the tourism industry will become the region's leading industries. And have strong support from countries, has promulgated the "open skies" policy. "City - island" of the chain -- the rise of the seaside town, carefree holiday island. We discuss the construction of the project scope for the entire project of single and double layer of the villa, on land, a total of 109 (502), at sea, 97 (164). Embellish the tripod to use for aluminum template with its professional design covers an area of 256800 m<sup>2</sup>.



Al-formwork areas: 256,800 square meters



# Project Cases -South America High-rise Apartment

Located in South America, Venezuela, the project covers an area of about 10 million square meters, including 200 small high-rise apartment buildings and 500 single-family villas. Four phase of the construction project construction. We discuss the construction of the project scope for the entire project, embellish the tripod with two handles for the professional design of the first set of small high-rise aluminum formwork, aluminum template area 1324.7 m<sup>2</sup>, covers an area of 546.3 m<sup>2</sup> steel template. Villas aluminum template, introduced is expected by the end of this year, next year with synchronous speed up the process, to complete the project.

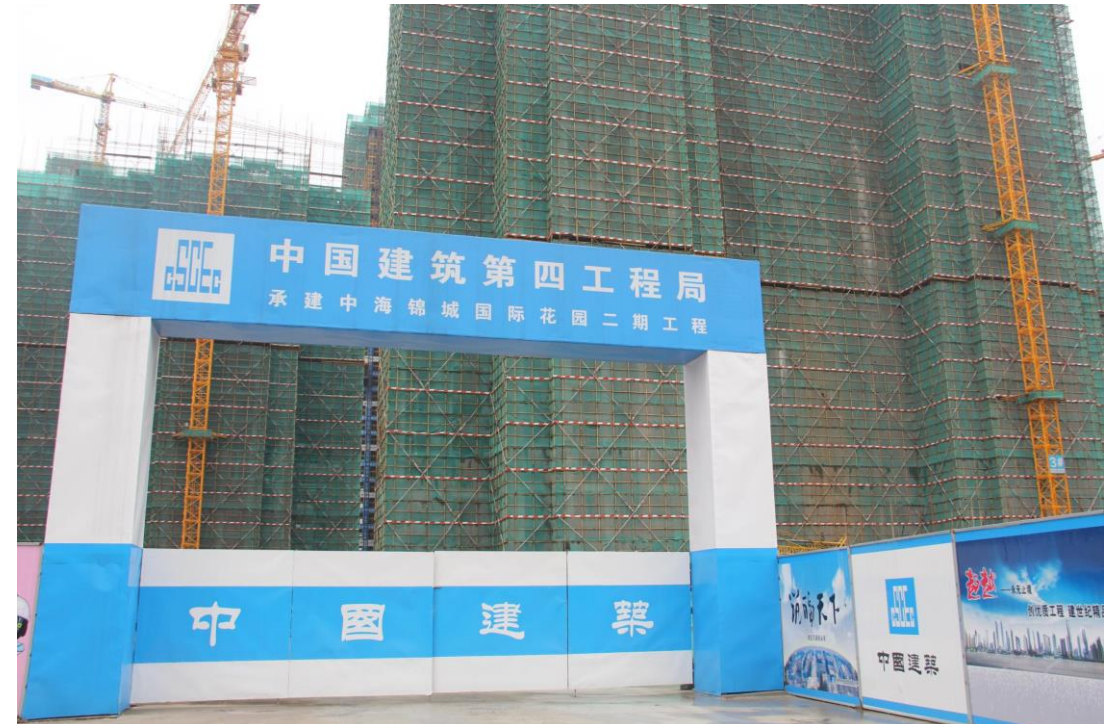
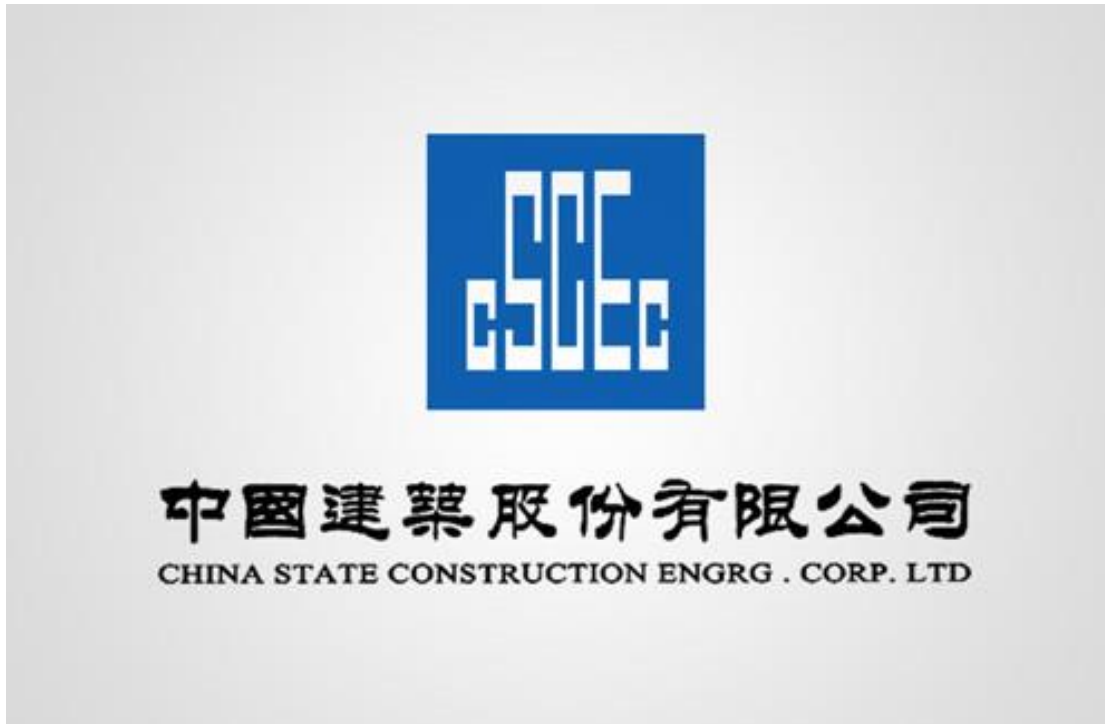


①  
Secondary pouring  
cement or  
bricklaying when  
renovation

Aluminum & Steel formwork combination  
areas: 374,200 square meters



# Wonderful Presentation



- Aluminum formwork supplier designated by CSCEC 4th.
- Our formwork is the most suitable system for workers
- Our formwork is the most suitable for engineering use of.



# Wonderful Presentation



- Many other real estate companies cooperate with us.
- Many times co-operations, stable friendly relationship.

- Ability to undertake foreign projects.
- Exporting to Venezuela, Malaysia, Indonesia, the Philippines, Cambodia, India, Israel, Pakistan and other developing countries.



# RD Promise

Regardless of whether aluminum formwork panels are New or Old, RD factory have to design the aluminum formwork depend on your projects, even if you want to buy second-hand al-formwork.

As you see, no matter what kind of al-formwork, RD factory always retain integrity of each aluminum formwork product.

- ✓ Excellent aluminum alloy ingot
- ✓ No using Returned or Waste aluminum material
- ✓ Good thickness aluminum alloy plate
- ✓ Never use the old as a brand new al-formwork
- ✓ No split joint aluminum sheet
- ✓ End sealing plate with fully welded
- ✓ Stably reinforce materials

***RD Al-formwork is more expensive than others***

***But it is reasonable to worth it~***



# Just offer the best for you!



New Al-formwork



New Al-formwork  
with Painting



Re-coating  
Second-hand  
Al-formwork

 **润鼎铝模**  
**AL-FORMWORK**



**Hope our profession will help you!**

**Email: [rdalformwork@gmail.com](mailto:rdalformwork@gmail.com)**

**Tel: 0757-63813070**

**Office Address:**

907 & 1505-1507 Building 6 Area A, Hao Science Park,  
Guicheng Nanhai Foshan City, Guangdong Province,  
China.

**Factory Address:**

(Navigation direct search"佛山市润鼎金属制品有限公司"  
can arrive easily)

**Website:**

**[www.rdalformwork.com](http://www.rdalformwork.com)**



**润鼎铝模**  
**AL-FORMWORK**

*More activities, please follow our page on Facebook: **Foshan Runding Metal Product Co., Ltd***